

Earth to Sky

Metagalactic • Intercosmic • Living World



CARPET TILES

 Mohawk Group



Earth to Sky

Inspired by the universe's radiant beauty, the Earth to Sky collection conjures up textures, colours and patterns found in raw, wild environments. The collection reveals breathtaking changing hues and deep shadowy tones, mirroring the depths of the earth and the far reaches of the cosmos. Lustrous metallic yarns and innovative tufting technology enhance the colour palettes even more, offering glimmers of natural light and a dense, chromatic feel.







BEYOND
FLOORING

729

859



Metagalactic

A textured interplay of different yarns giving your room a spatial feel.



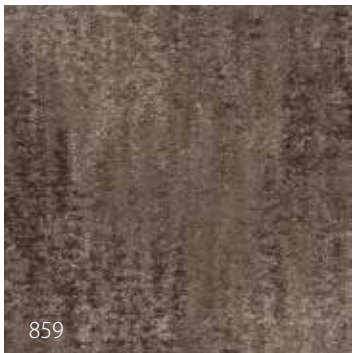
BEYOND
FLOORING



859

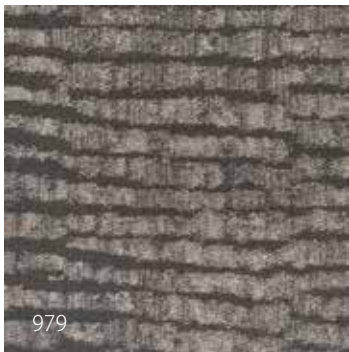
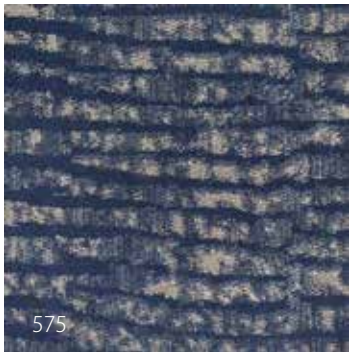
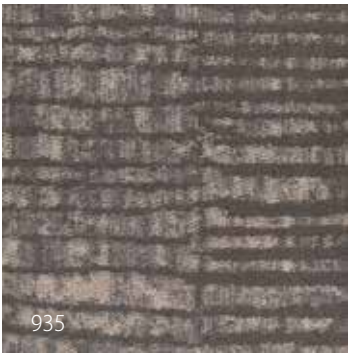
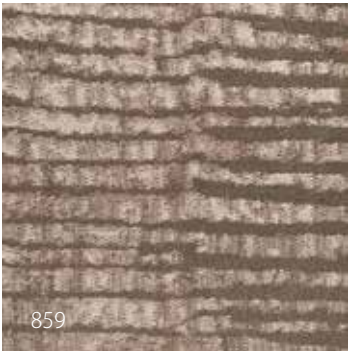
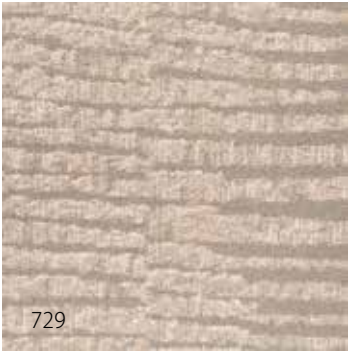
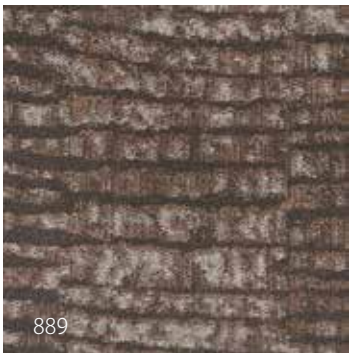
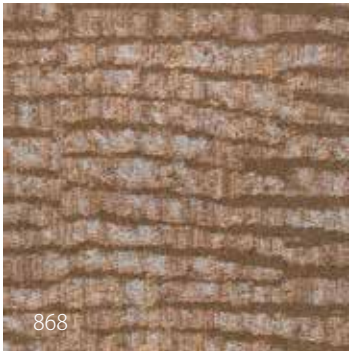
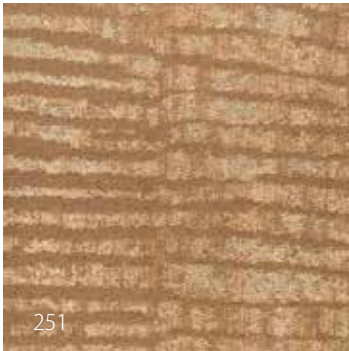
Intercosmic

Deep shadowy tones contrast with lustrous metallic yarns for a cosmic look.



Living World

Interplay of solid and non-solid patterns, creating an undulating landscape.





729

About Earth to Sky

top-quality yarn and innovative secondary backing

Only the best is good enough for the Earth to Sky collection: Duracolor yarns and an EcoFlex NXT backing guarantee impeccable products that last a lifetime.

duracolor[®]

Raising the bar for high-performing carpet tiles in all rooms and projects, Duracolor nylon combines stain resistance and sustainability with timeless beauty.



Performance

- Resistant to 99% of all stains thanks to permanent built-in protection



Sustainability

- 30% recycled content: 25% pre-consumer and 5% post-consumer
- Extended product life reduces environmental impact



Forever beautiful

- Lasting colours: unsurpassed fastness to light and atmospheric toxins
- Proven track record of 20 years: originally patented by Mohawk in 1991



EcoFlex™ NXT

EcoFlex NXT backing is 40% lighter than similar PVC-products, and thus easier to install and less expensive to ship. Incorporating a minimum of 35% recycled content, the backing is a showpiece of sustainable design.



Performance

- Dimensional stability at the best
- Prevents moisture damage from spills and cleaning
- Superior tuft bind: resistant to edge ravel
- Moisture conditions not to exceed 99% rH
- 40% Lighter than a normal standard backing



Sustainability

- No plasticisers or PVC
- Minimum of 35% pre-consumer recycled content



Certification

- Gold level certified in accordance with NSF/ANSI 140
- CRI Green Label Plus certified





About IVC

IVC is the commercial branch of IVC Group, dedicated to creating unique floors for housing, retail, hospitality and leisure, office, healthcare and education projects. Founded in 1997, IVC Group is Europe's leading manufacturer of luxury vinyl tiles (LVT), sheet vinyl and carpet tiles. With 1,600 employees and 8 production units in Belgium, Luxembourg and the United States, IVC Group produces over 120 million m² of flooring per year.

As of 2015, IVC Group grows under the wings of Mohawk Industries Inc, the world's market leader in all things flooring, with a heritage of craftsmanship that spans more than 130 years. This broadens IVC's global reach – bringing us closer to you, wherever you go.

LVT

IVC's broad range of carpet tiles allows you to create unique floors that light up every room. But the ultimate way to take your project to new heights is combining different products into that one special look. That's why IVC offers a variety of LVT, which can easily be mixed and matched with carpet tiles. Ranging from neutral shades and refined visuals to carefully chosen patterns and bright colours, our LVT floors offer you endless design potential.



Easy installation

Flawless combinations

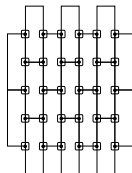
Finding the right floor for your project is one thing, but installing it can be a cumbersome process. Not to worry: IVC hands you the tools to ease this step. On top of that, our broad portfolio of 100% in-house designed LVT perfectly blends with our carpet tiles, to create that unique look you’ve always imagined.

FLEXLOK

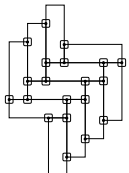
The innovative FlexLok system is the ideal alternative to traditional adhesive installation methods. The odorless dry technique virtually eliminates harmful VOCs and can be used on all underlays, for all IVC carpet tiles. Rely on FlexLok for a fast, easy installation of flexible, floating floors, without any glue. Moreover, the FlexLok system is Declare, HPD & DRI Green label certified.

INSTALLING PLANKS

Lay the first row of planks and put FlexLok pads at each joint, adhesive side up. Install the remaining carpet tiles, placing FlexLok tabs as illustrated in the image.



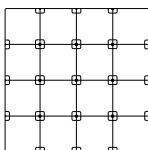
For herringbone designs, put FlexLok pads on each corner, adhesive side up.



INSTALLING TILES

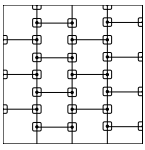
Quarter turn, monolithic, and multi-directional

Put FlexLok pads at each corner of the tiles, adhesive side up.



Brick and Ashlar

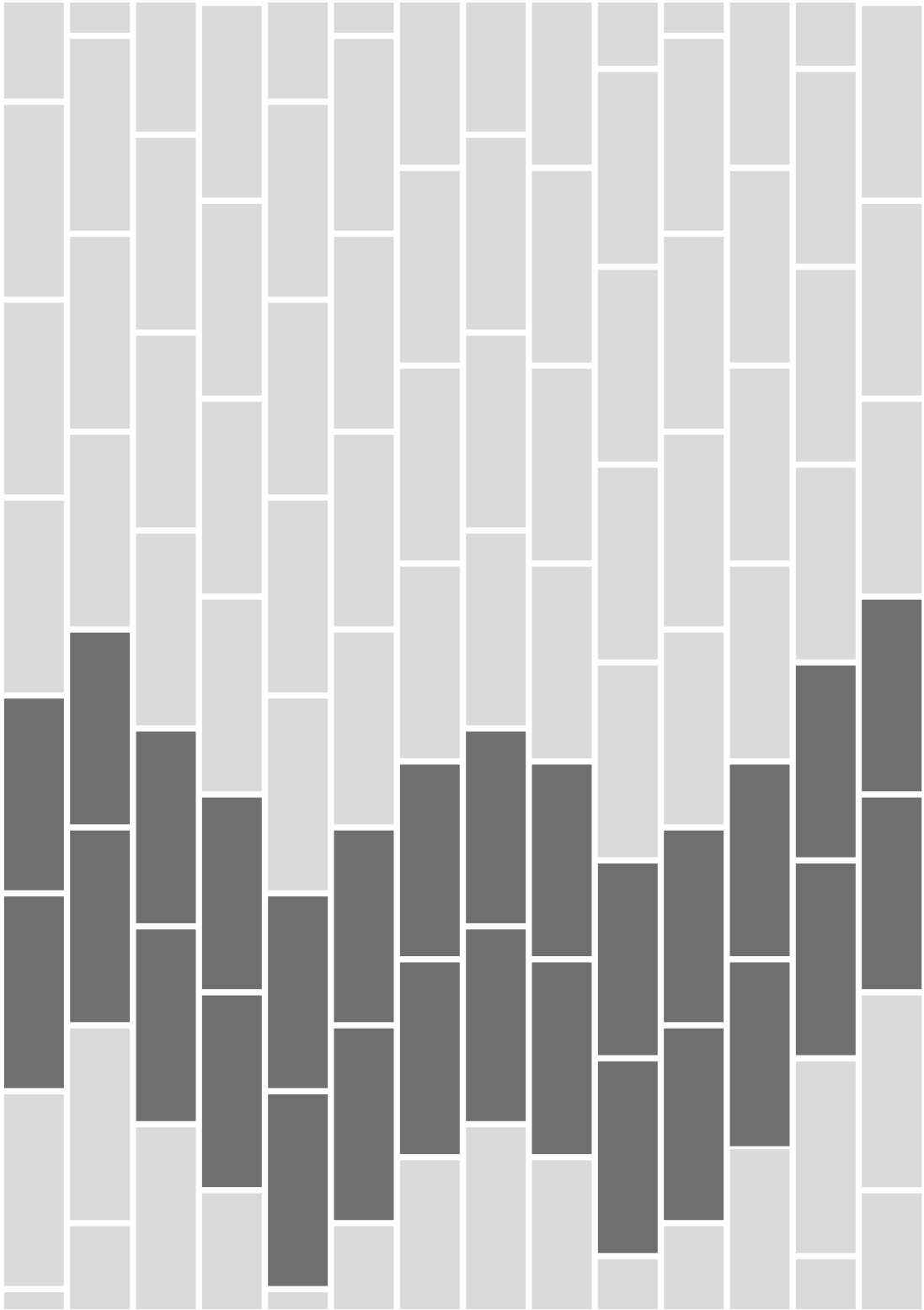
Lay the first row of planks and put FlexLok pads at each joint, adhesive side up. Install the remaining carpet tiles, placing FlexLok tabs as illustrated in the image.



Get inspired



Metagalactic 859 - 729



Metagalactic

Technical Specifications

Spécifications techniques - Technische specificaties - Technische Spezifikationen

Construction Structure - Structuur - Konstruktion	Tufted 1/12" gauge loop	
Pile fibre composition Composition des fibres - Poolmateriaal - Material der Polnutschicht	100% Duracolor® Premium Nylon (30% recycled content) 66% solution dyed 34% space dyed Pa6	
Secondary backing Envers - Rug - Beschichtung	EcoFlex™ NXT (35% recycled content)	
Total weight Poids total - Totaal gewicht - Gesamtgewicht	4600 g/m²	
Pile weight Poids du velours - Pool gewicht - Poleinsatzgewicht	1255 g/m²	
Surface pile weight Poids du velours utile - Effectieve poolmassa - Polnutschichtgewicht	565 g/m²	
Total thickness Epaisseur totale - Totale dikte - Gesamtdicke	8,6 mm	
Surface pile thickness Hauteur du velours - Poolhoogte - Poldicke	3,7 mm	
Surface pile density Densité du velours - Pooldichtheid - Polrohdichte	0,154 g/cm³	
Number of tufts Nombre de touffes - Aantal noppen - Noppenzahl	185.826	
Wear classification Classement d'usage - Gebruiksklasse - Beanspruchungsklasse	EN 1307	32 / LC1
Castor chair suitability Emploi chaise à roulettes - Rolstoelgeschiktheid - Stuhlrolleneignung	EN 985	A: intensive use
Fire classification Comportement au feu - Brandgedrag - Brandklasse	EN 13501-1	Bfl-s1
Dimensional stability Stabilité dimensionnelle - Dimensionele stabiliteit - Dimensionstabilität	EN 986	≤ 0,2%
Colour fastness to light Solidité des couleurs à la lumière - Lichtbestendigheid van de kleuren - Lichtechtheit	EN ISO 105-B02	≥ 5-6
Rubbing fastness Solidité au frottement - Wrijftechtheid - Reibechtheit	EN ISO 105-X12	≥ 4
Colour fastness to water Solidité à l'eau - Waterechtheid - Wasserechtheit	EN ISO 105-E01	≥ 4
Thermal resistance Résistance thermique - Warmtedoorlaatweerstand - Wärmedurchlasswiderstand	ISO 8302	In progress
Sound absorption Absorption phonique - Geluidsabsorptie - Schallabsorptionsgrad	EN ISO 354	0,20 αw Hz 125 250 500 1000 2000 4000 αs 0,06 0,02 0,10 0,23 0,31 0,44
Impact sound reduction Réduction phonique aux bruits d'impacts - Reductie contactgeluid - Trittschallverbesserungsmaß	EN ISO 10140-3	ΔLw = 29 dB
Permanent antistatic Antistatique permanent - Permanent antistatisch - Permanent antistatisch	ISO 6356	≤ 2 kV
Transversal resistance Résistance transversale - Doorgangsweerstand - Durchgangswiderstand	ISO/DIS 10965	≤ 10⁹ Ohm
Number of colours Nombre de coloris - Aantal kleuren - Anzahl der Farben	9	
Size & Packaging Dimensions & Emballage - Formaat en verpakking - Abmessungen & Verpackung	30,48 x 91,44 cm (12" x 36") 3,9 m²/box - 40 boxes/pallet	
GUT-Prodis Number Numéro GUT Prodis - Nummer GUT Prodis - GUT-Prodis Nummer	In progress	

















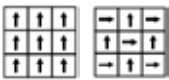
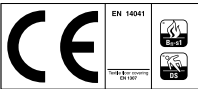
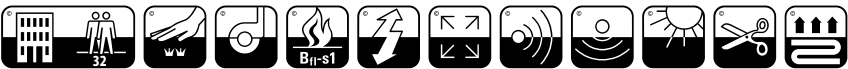



We reserve all rights for technical improvements.

Intercosmic

Technical Specifications
Spécifications techniques - Technische specificaties - Technische Spezifikationen

Construction Structure - Structuur - Konstruktion		Tufted 1/12" gauge loop							
Pile fibre composition Composition des fibres - Poolmateriaal - Material der Polnutzschicht		100% Duracolor® Premium Nylon (30% recycled content) 66% solution dyed 34% space dyed Pa6							
Secondary backing Envers - Rug - Beschichtung		EcoFlex™ NXT (35% recycled content)							
Total weight Poids total - Totaal gewicht - Gesamtgewicht		4600 g/m²							
Pile weight Poids du velours - Pool gewicht - Poleinsatzgewicht		1255 g/m²							
Surface pile weight Poids du velours utile - Effectieve poolmassa - Polnutzschichtgewicht		555 g/m²							
Total thickness Epaisseur totale - Totale dikte - Gesamtdicke		8,9 mm							
Surface pile thickness Hauteur du velours - Poolhoogte - Poldicke		4 mm							
Surface pile density Densité du velours - Pooldichtheid - Polrohndichte		0,138 g/cm³							
Number of tufts Nombre de touffes - Aantal noppen - Noppenzahl		185.826							
Wear classification Classement d'usage - Gebruiksklasse - Beanspruchungsklasse	EN 1307	32 / LC2							
Castor chair suitability Emploi chaise à roulettes - Rolstoelgeschiktheid - Stuhlrolleneignung	EN 985	A: intensive use							
Fire classification Comportement au feu - Brandgedrag - Brandklasse	EN 13501-1	Bfl-s1							
Dimensional stability Stabilité dimensionnelle - Dimensionele stabiliteit - Dimensionstabilität	EN 986	≤ 0,2%							
Colour fastness to light Solidité des couleurs à la lumière - Lichtbestendigheid van de kleuren - Lichtechtheit	EN ISO 105-B02	≥ 5-6							
Rubbing fastness Solidité au frottement - Wrijftechtheid - Reibechtheit	EN ISO 105-X12	≥ 4							
Colour fastness to water Solidité à l'eau - Waterechtheid - Wasserechtheit	EN ISO 105-E01	≥ 4							
Thermal resistance Résistance thermique - Warmtedoorlaatweerstand - Wärmedurchlasswiderstand	ISO 8302	In progress							
Sound absorption Absorption phonique - Geluidsabsorptie - Schallabsorptionsgrad	EN ISO 354	0,20 <i>a</i> w Hz 125 250 500 1000 2000 4000 <i>a</i> s 0,00 0,07 0,09 0,25 0,36 0,53							
Impact sound reduction Réduction phonique aux bruits d'impacts - Reductie contactgeluid - Trittschallverbesserungsmaß	EN ISO 10140-3	ΔLw = 28 dB							
Permanent antistatic Antistatique permanent - Permanent antistatisch - Permanent antistatisch	ISO 6356	≤ 2 kV							
Transversal resistance Résistance transversale - Doorgangsweerstand - Durchgangswiderstand	ISO/DIS 10965	≤ 10 ⁹ Ohm							
Number of colours Nombre de coloris - Aantal kleuren - Anzahl der Farben	9								
Size & Packaging Dimensions & Emballage - Formaat en verpakking - Abmessungen & Verpackung	60,96 x 60,96 cm (24" x 24") 4,46 m²/box - 20 boxes/pallet								
GUT-Prodís Number Numéro GUT Prodis - Nummer GUT Prodis - GUT-Prodís Nummer	In progress								



FLEXLOK

We reserve all rights for technical improvements.

Spécifications techniques - Technische specificaties - Technische Spezifikationen




Light reflection values

Metagalactic - Intercosmic - Living World									
Colour nr.		251	575	729	859	868	889	935	979 989
LRV	L Value	In progress							
	Y Value	In progress							

We reserve all rights for technical improvements.



CARPET TILES

 Mohawk Group

Nijverheidslaan 29
8580 Avelgem
België
+32 56 65 32 11
www.ivc-commercial.com

BEYOND
FLOORING