

Expedition I

Lithosphere • Hydrosphere • Ecosphere • Layered Earth



CARPET TILES

 Mohawk Group



Expedition I

Throughout its history on earth, humankind has witnessed various phenomena, often leaving us in awe of nature's beauty. Inspired by these wonders, the four Expedition I styles offer stunning solutions for corporate offices and healthcare environments. Moreover, eight coordinating ColorBeat designs add an additional splash of serene colours to your project, allowing your creativity to roam free.



DO GOOD THINGS



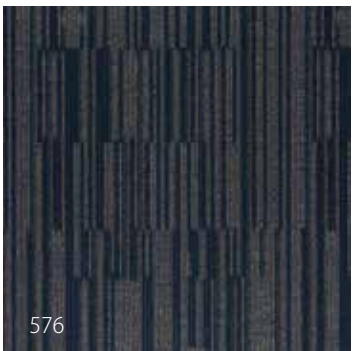
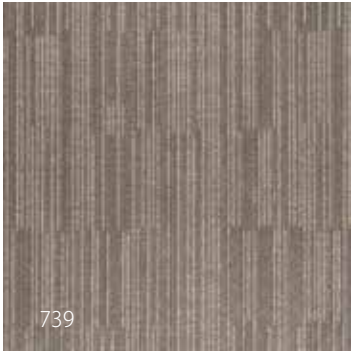
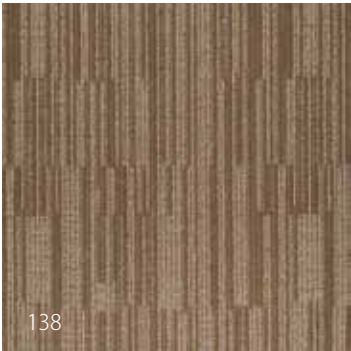


BEYOND
FLOORING

739

Lithosphere

Staggered striations, inspired by earth's inner layers.





BEYOND
FLOORING



949

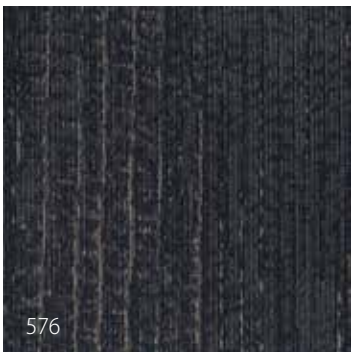
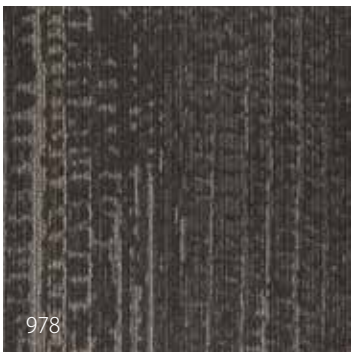
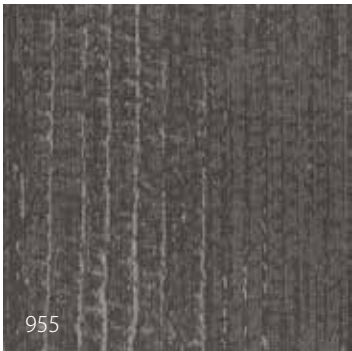
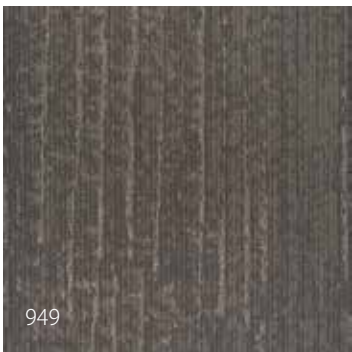
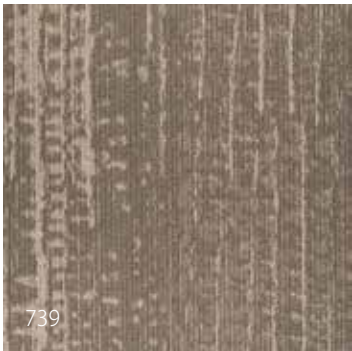
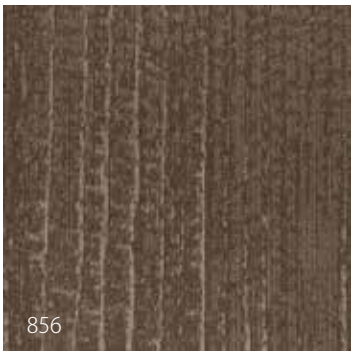
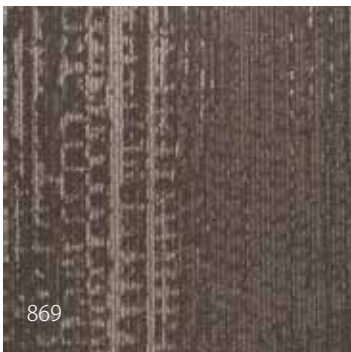
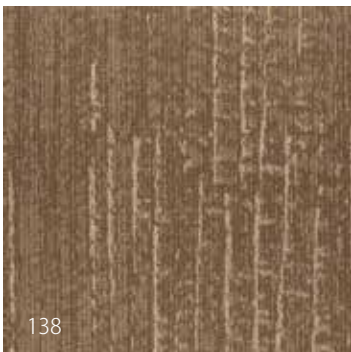


Hydrosphere

Large textured patterns with an organic feel, inspired by water flows.

Ecosphere

Textured striations with scaled undertones, inspired by woods and forests.





739

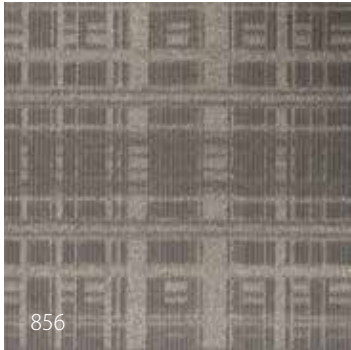
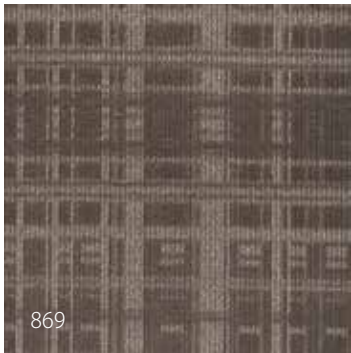
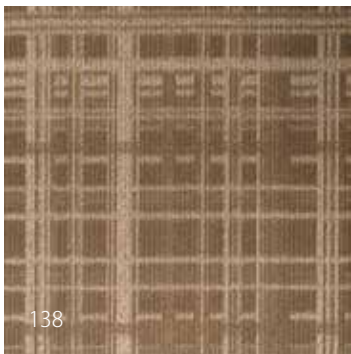
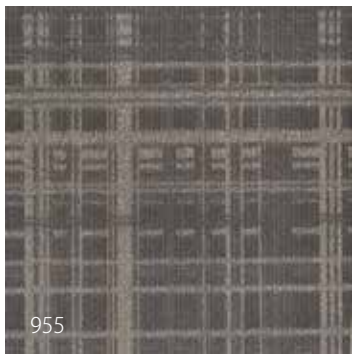
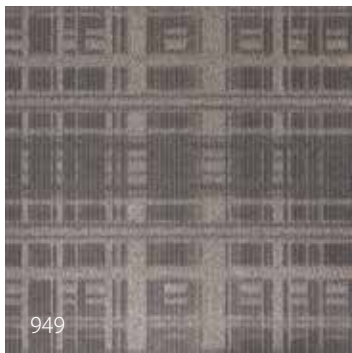
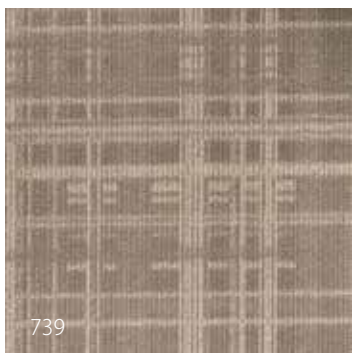
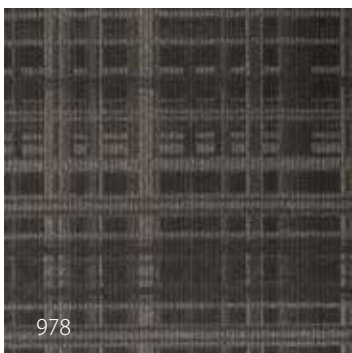
Layered Earth

Urban-looking geometric patterns, inspired by a view of the earth from space.



978

BEYOND
FLOORING



BEYOND
FLOORING



ColorBeat

Go for an eye-catching floor by combining your favourite carpet tile with a ColorBeat accent, border or inset tile. ColorBeat textured tiles come in 18 solid colours, giving you ultimate creative freedom.

Remark: can be installed as an accent tile only, always in a combination with another standard carpet tile



ColorBeat 917

Ecosphere 576

About Expedition I

top-quality yarn and innovative secondary backing

Only the best is good enough for the Expedition I collection: Duracolor yarns and an EcoFlex Statera backing guarantee impeccable products that last a lifetime.

duracolor

Raising the bar for high-performing carpet tiles in all rooms and projects, Duracolor nylon combines stain resistance and sustainability with timeless beauty.



Performance

- Resistant to 99% of all stains thanks to permanent built-in protection



Sustainability

- 30% recycled content: 25% pre-consumer and 5% post-consumer
- Extended product life reduces environmental impact



Forever beautiful

- Lasting colours: unsurpassed fastness to light and atmospheric toxins
- Proven track record of 20 years: originally patented by Mohawk in 1991



EcoFlex™ Statera

EcoFlex™ Statera backing is lighter than similar PVC-products, and thus easier to install and less expensive to ship. Made up of modified bitumen with 70% recycled limestone, EcoFlex™ Statera is a showpiece of sustainable design.



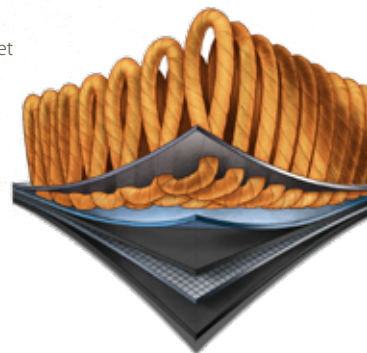
Performance

- Used and trusted for almost 40 years by the commercial flooring market
- Dimensional stability at its best
- Flexible solution: 100% loose laid carpet tile
- Highest fire rating for commercial floor coverings: Bfl-s1



Sustainability

- 70% pre-consumer recycled content by finished product weight
- Contributes to GUT-Prodís certificate





About IVC

IVC is the commercial branch of IVC Group, dedicated to creating unique floors for housing, retail, hospitality and leisure, office, healthcare and education projects. Founded in 1997, IVC Group is Europe's leading manufacturer of luxury vinyl tiles (LVT), sheet vinyl and carpet tiles. With 1,600 employees and 8 production units in Belgium, Luxembourg and the United States, IVC Group produces over 120 million m² of flooring per year.

As of 2015, IVC Group grows under the wings of Mohawk Industries Inc, the world's market leader in all things flooring, with a heritage of craftsmanship that spans more than 130 years. This broadens IVC's global reach – bringing us closer to you, wherever you go.

LVT

IVC's broad range of carpet tiles allows you to create unique floors that light up every room. But the ultimate way to take your project to new heights is combining different products into that one special look. That's why IVC offers a variety of LVT, which can easily be mixed and matched with carpet tiles. Ranging from neutral shades and refined visuals to carefully chosen patterns and bright colours, our LVT floors offer you endless design potential.



Easy installation

Flawless combinations

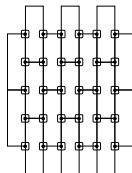
Finding the right floor for your project is one thing, but installing it can be a cumbersome process. Not to worry: IVC hands you the tools to ease this step. On top of that, our broad portfolio of 100% in-house designed LVT perfectly blends with our carpet tiles, to create that unique look you’ve always imagined.

FLEXLOK

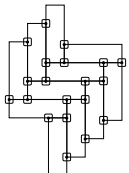
The innovative FlexLok system is the ideal alternative to traditional adhesive installation methods. The odorless dry technique virtually eliminates harmful VOCs and can be used on all underlays, for all IVC carpet tiles. Rely on FlexLok for a fast, easy installation of flexible, floating floors, without any glue. Moreover, the FlexLok system is Declare, HPD & DRI Green label certified.

INSTALLING PLANKS

Lay the first row of planks and put FlexLok pads at each joint, adhesive side up. Install the remaining carpet tiles, placing FlexLok tabs as illustrated in the image.



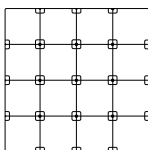
For herringbone designs, put FlexLok pads on each corner, adhesive side up.



INSTALLING TILES

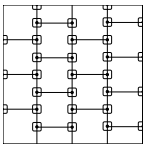
Quarter turn, monolithic, and multi-directional

Put FlexLok pads at each corner of the tiles, adhesive side up.



Brick and Ashlar

Lay the first row of planks and put FlexLok pads at each joint, adhesive side up. Install the remaining carpet tiles, placing FlexLok tabs as illustrated in the image.



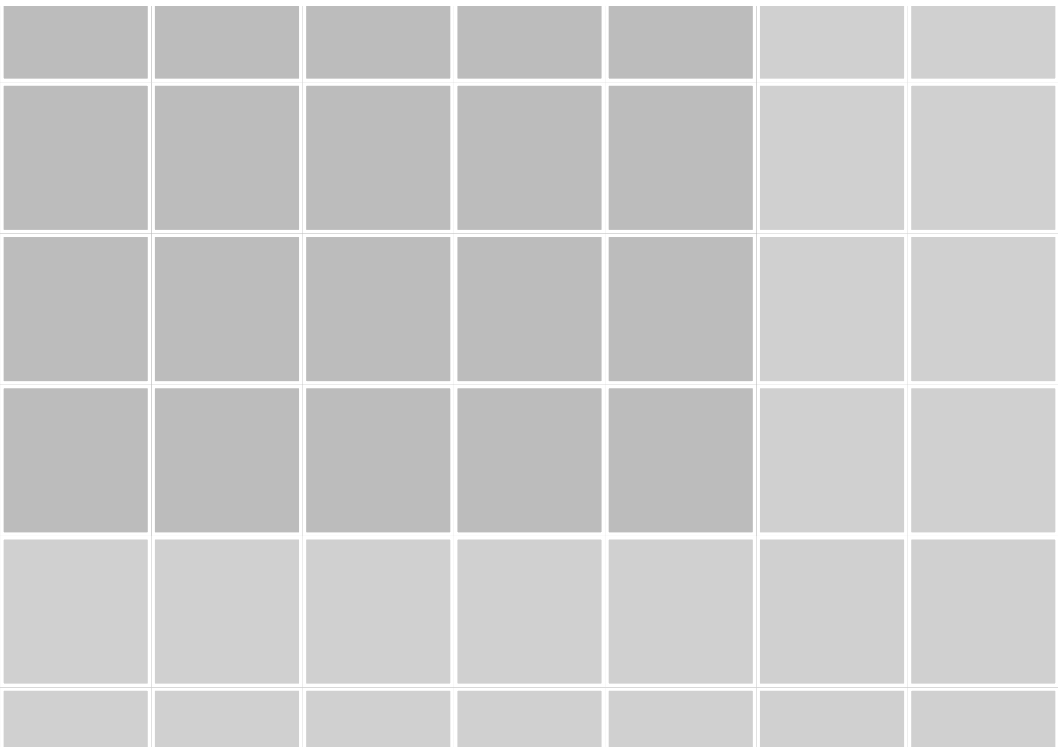
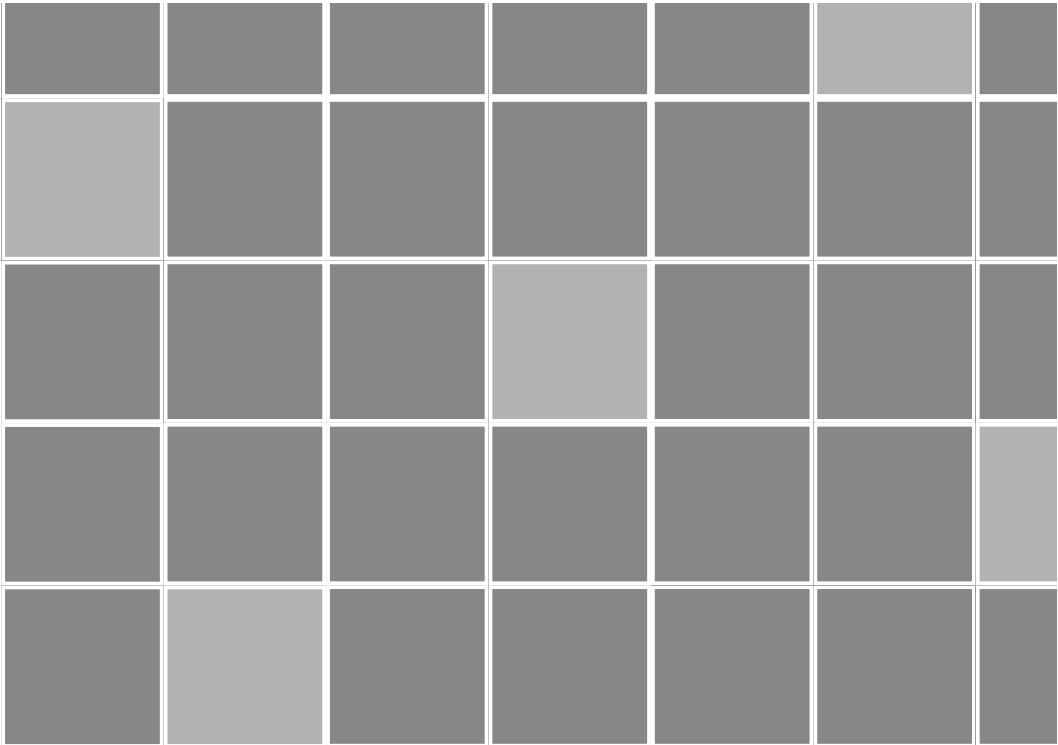
Get inspired



Ecosphere 576 - ColorBeat 833



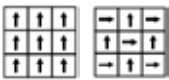
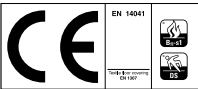
Lithosphere 739



Lithosphere

Technical Specifications
Spécifications techniques - Technische specificaties - Technische Spezifikationen

Construction Structure - Structuur - Konstruktion	Tufted 1/12" gauge loop	
Pile fibre composition Composition des fibres - Poolmateriaal - Material der Polnutzschicht	100% Duracolor® Premium Nylon (30% recycled content) 100% solution dyed Pa6	
Secondary backing Envers - Rug - Beschichtung	EcoFlex™ Statera (modified bitumen, 70% recycled content)	
Total weight Poids total - Totaal gewicht - Gesamtgewicht	4250 g/m²	
Pile weight Poids du velours - Pool gewicht - Poleinsatzgewicht	680 g/m²	
Surface pile weight Poids du velours utile - Effectieve poolmassa - Polnutzschichtgewicht	420 g/m²	
Total thickness Epaisseur totale - Totale dikte - Gesamtdicke	7 mm	
Surface pile thickness Hauteur du velours - Poolhoogte - Poldicke	3,5 mm	
Surface pile density Densité du velours - Pooldichtheid - Polrohndichte	0,115 g/cm³	
Number of tufts Nombre de touffes - Aantal noppen - Noppenzahl	220.800/m²	
Wear classification Classement d'usage - Gebruiksklasse - Beanspruchungsklasse	EN 1307	33 / LC2
Castor chair suitability Emploi chaise à roulettes - Rolstoelgeschiktheid - Stuhlrolleneignung	EN 985	A: intensive use
Fire classification Comportement au feu - Brandgedrag - Brandklasse	EN 13501-1	Bfl-s1
Dimensional stability Stabilité dimensionnelle - Dimensionele stabiliteit - Dimensionstabilität	EN 986	≤ 0,2%
Colour fastness to light Solidité des couleurs à la lumière - Lichtbestendigheid van de kleuren - Lichtechtheit	EN ISO 105-B02	≥ 7
Rubbing fastness Solidité au frottement - Wrijftechtheid - Reibechtheit	EN ISO 105-X12	≥ 4
Colour fastness to water Solidité à l'eau - Waterechtheid - Wasserechtheit	EN ISO 105-E01	≥ 4
Thermal resistance Résistance thermique - Warmtedoorlaatweerstand - Wärmedurchlasswiderstand	ISO 8302	0,080 m².K/w
Sound absorption Absorption phonique - Geluidsabsorptie - Schallabsorptionsgrad	EN ISO 354	In progress Hz α s
Impact sound reduction Réduction phonique aux bruits d'impacts - Reductie contactgeluid - Trittschallverbesserungsmaß	EN ISO 10140-3	In progress
Permanent antistatic Antistatique permanent - Permanent antistatisch - Permanent antistatisch	ISO 6356	≤ 2 kV
Transversal resistance Résistance transversale - Doorgangsweerstand - Durchgangswiderstand	ISO/DIS 10965	≤ 10⁹ Ohm
Number of colours Nombre de coloris - Aantal kleuren - Anzahl der Farben	8	
Size & Packaging Dimensions & Emballage - Formaat en verpakking - Abmessungen & Verpackung	60,96 x 60,96 cm (24" x 24") 5,2 m²/box - 20 boxes/pallet	
GUT-Prodis Number Numéro GUT Prodis - Nummer GUT Prodis - GUT-Prodis Nummer	In progress	



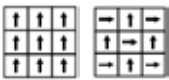
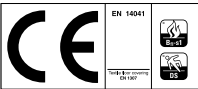
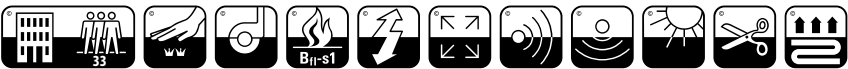
FLEXLOK

We reserve all rights for technical improvements.

Hydrosphere

Technical Specifications
Spécifications techniques - Technische specificaties - Technische Spezifikationen

Construction Structure - Structuur - Konstruktion	Tufted 1/12" gauge loop	
Pile fibre composition Composition des fibres - Poolmateriaal - Material der Polnutzschicht	100% Duracolor® Premium Nylon (30% recycled content) 100% solution dyed Pa6	
Secondary backing Envers - Rug - Beschichtung	EcoFlex™ Statera (modified bitumen, 70% recycled content)	
Total weight Poids total - Totaal gewicht - Gesamtgewicht	4250 g/m²	
Pile weight Poids du velours - Pool gewicht - Poleinsatzgewicht	680 g/m²	
Surface pile weight Poids du velours utile - Effectieve poolmassa - Polnutzschichtgewicht	420 g/m²	
Total thickness Epaisseur totale - Totale dikte - Gesamtdicke	6,6 mm	
Surface pile thickness Hauteur du velours - Poolhoogte - Poldicke	3,1 mm	
Surface pile density Densité du velours - Pooldichtheid - Polrohndichte	0,138 g/cm³	
Number of tufts Nombre de touffes - Aantal noppen - Noppenzahl	201.600/m²	
Wear classification Classement d'usage - Gebruiksklasse - Beanspruchungsklasse	EN 1307	33 / LC2
Castor chair suitability Emploi chaise à roulettes - Rolstoelgeschiktheid - Stuhlrolleneignung	EN 985	A: intensive use
Fire classification Comportement au feu - Brandgedrag - Brandklasse	EN 13501-1	Bfl-s1
Dimensional stability Stabilité dimensionnelle - Dimensionele stabiliteit - Dimensionstabilität	EN 986	≤ 0,2%
Colour fastness to light Solidité des couleurs à la lumière - Lichtbestendigheid van de kleuren - Lichtechtheit	EN ISO 105-B02	≥ 7
Rubbing fastness Solidité au frottement - Wrijftechtheid - Reibechtheit	EN ISO 105-X12	≥ 4
Colour fastness to water Solidité à l'eau - Waterechtheid - Wasserechtheit	EN ISO 105-E01	≥ 4
Thermal resistance Résistance thermique - Warmtedoorlaatweerstand - Wärmedurchlasswiderstand	ISO 8302	0,073 m².K/w
Sound absorption Absorption phonique - Geluidsabsorptie - Schallabsorptionsgrad	EN ISO 354	In progress Hz α s
Impact sound reduction Réduction phonique aux bruits d'impacts - Reductie contactgeluid - Trittschallverbesserungsmaß	EN ISO 10140-3	In progress
Permanent antistatic Antistatique permanent - Permanent antistatisch - Permanent antistatisch	ISO 6356	≤ 2 kV
Transversal resistance Résistance transversale - Doorgangsweerstand - Durchgangswiderstand	ISO/DIS 10965	≤ 10⁹ Ohm
Number of colours Nombre de coloris - Aantal kleuren - Anzahl der Farben	8	
Size & Packaging Dimensions & Emballage - Formaat en verpakking - Abmessungen & Verpackung	60,96 x 60,96 cm (24" x 24") 5,2 m²/box - 20 boxes/pallet	
GUT-Prodis Number Numéro GUT Prodis - Nummer GUT Prodis - GUT-Prodis Nummer	In progress	

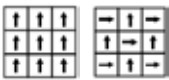
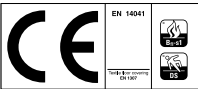
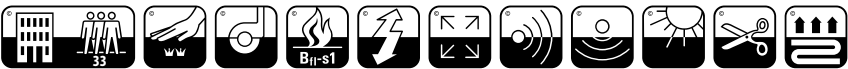


FLEXLOK

Ecosphere

Technical Specifications
Spécifications techniques - Technische specificaties - Technische Spezifikationen

Construction Structure - Structuur - Konstruktion	Tufted 1/12" gauge loop	
Pile fibre composition Composition des fibres - Poolmateriaal - Material der Polnutzschicht	100% Duracolor® Premium Nylon (30% recycled content) 100% solution dyed Pa6	
Secondary backing Envers - Rug - Beschichtung	EcoFlex™ Statera (modified bitumen, 70% recycled content)	
Total weight Poids total - Totaal gewicht - Gesamtgewicht	4250 g/m²	
Pile weight Poids du velours - Pool gewicht - Poleinsatzgewicht	680 g/m²	
Surface pile weight Poids du velours utile - Effectieve poolmassa - Polnutzschichtgewicht	420 g/m²	
Total thickness Epaisseur totale - Totale dikte - Gesamtdicke	6,5 mm	
Surface pile thickness Hauteur du velours - Poolhoogte - Poldicke	3,4 mm	
Surface pile density Densité du velours - Pooldichtheid - Polrohndichte	0,119 g/cm³	
Number of tufts Nombre de touffes - Aantal noppen - Noppenzahl	211.200/m²	
Wear classification Classement d'usage - Gebruiksklasse - Beanspruchungsklasse	EN 1307	33 / LC2
Castor chair suitability Emploi chaise à roulettes - Rolstoelgeschiktheid - Stuhlrolleneignung	EN 985	A: intensive use
Fire classification Comportement au feu - Brandgedrag - Brandklasse	EN 13501-1	Bfl-s1
Dimensional stability Stabilité dimensionnelle - Dimensionele stabiliteit - Dimensionstabilität	EN 986	≤ 0,2%
Colour fastness to light Solidité des couleurs à la lumière - Lichtbestendigheid van de kleuren - Lichtechtheit	EN ISO 105-B02	≥ 7
Rubbing fastness Solidité au frottement - Wrijftechtheid - Reibechtheit	EN ISO 105-X12	≥ 4
Colour fastness to water Solidité à l'eau - Waterechtheid - Wasserechtheit	EN ISO 105-E01	≥ 4
Thermal resistance Résistance thermique - Warmtedoorlaatweerstand - Wärmedurchlasswiderstand	ISO 8302	0,072 m².K/w
Sound absorption Absorption phonique - Geluidsabsorptie - Schallabsorptionsgrad	EN ISO 354	In progress Hz α s
Impact sound reduction Réduction phonique aux bruits d'impacts - Reductie contactgeluid - Trittschallverbesserungsmaß	EN ISO 10140-3	In progress
Permanent antistatic Antistatique permanent - Permanent antistatisch - Permanent antistatisch	ISO 6356	≤ 2 kV
Transversal resistance Résistance transversale - Doorgangsweerstand - Durchgangswiderstand	ISO/DIS 10965	≤ 10⁹ Ohm
Number of colours Nombre de coloris - Aantal kleuren - Anzahl der Farben	8	
Size & Packaging Dimensions & Emballage - Formaat en verpakking - Abmessungen & Verpackung	60,96 x 60,96 cm (24" x 24") 5,2 m²/box - 20 boxes/pallet	
GUT-Prodis Number Numéro GUT Prodis - Nummer GUT Prodis - GUT-Prodis Nummer	In progress	



FLEXLOK

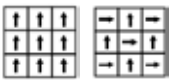
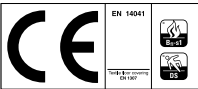
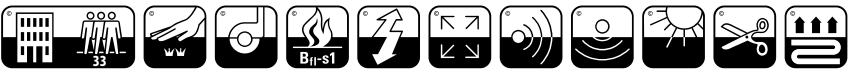
We reserve all rights for technical improvements.

Layered Earth

Technical Specifications

Spécifications techniques - Technische specificaties - Technische Spezifikationen

Construction Structure - Structuur - Konstruktion	Tufted 1/12" gauge loop	
Pile fibre composition Composition des fibres - Poolmateriaal - Material der Polnutzschicht	100% Duracolor® Premium Nylon (30% recycled content) 100% solution dyed Pa6	
Secondary backing Envers - Rug - Beschichtung	EcoFlex™ Statera (modified bitumen, 70% recycled content)	
Total weight Poids total - Totaal gewicht - Gesamtgewicht	4250 g/m²	
Pile weight Poids du velours - Pool gewicht - Poleinsatzgewicht	680 g/m²	
Surface pile weight Poids du velours utile - Effectieve poolmassa - Polnutzschichtgewicht	420 g/m²	
Total thickness Epaisseur totale - Totale dikte - Gesamtdicke	7 mm	
Surface pile thickness Hauteur du velours - Poolhoogte - Poldicke	3,7 mm	
Surface pile density Densité du velours - Pooldichtheid - Polrohndichte	0,113 g/cm³	
Number of tufts Nombre de touffes - Aantal noppen - Noppenzahl	220.800/m²	
Wear classification Classement d'usage - Gebruiksklasse - Beanspruchungsklasse	EN 1307	33 / LC2
Castor chair suitability Emploi chaise à roulettes - Rolstoelgeschiktheid - Stuhlrolleneignung	EN 985	A: intensive use
Fire classification Comportement au feu - Brandgedrag - Brandklasse	EN 13501-1	Bfl-s1
Dimensional stability Stabilité dimensionnelle - Dimensionele stabiliteit - Dimensionstabilität	EN 986	≤ 0,2%
Colour fastness to light Solidité des couleurs à la lumière - Lichtbestendigheid van de kleuren - Lichtechtheit	EN ISO 105-B02	≥ 7
Rubbing fastness Solidité au frottement - Wrijftechtheid - Reibechtheit	EN ISO 105-X12	≥ 4
Colour fastness to water Solidité à l'eau - Waterechtheid - Wasserechtheit	EN ISO 105-E01	≥ 4
Thermal resistance Résistance thermique - Warmtedoorlaatweerstand - Wärmedurchlasswiderstand	ISO 8302	0,077 m².K/w
Sound absorption Absorption phonique - Geluidsabsorptie - Schallabsorptionsgrad	EN ISO 354	In progress Hz α s
Impact sound reduction Réduction phonique aux bruits d'impacts - Reductie contactgeluid - Trittschallverbesserungsmaß	EN ISO 10140-3	In progress
Permanent antistatic Antistatique permanent - Permanent antistatisch - Permanent antistatisch	ISO 6356	≤ 2 kV
Transversal resistance Résistance transversale - Doorgangsheerstand - Durchgangswiderstand	ISO/DIS 10965	≤ 10⁹ Ohm
Number of colours Nombre de coloris - Aantal kleuren - Anzahl der Farben	8	
Size & Packaging Dimensions & Emballage - Formaat en verpakking - Abmessungen & Verpackung	60,96 x 60,96 cm (24" x 24") 5,2 m²/box - 20 boxes/pallet	
GUT-Prodis Number Numéro GUT Prodis - Nummer GUT Prodis - GUT-Prodis Nummer	In progress	



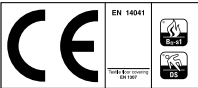
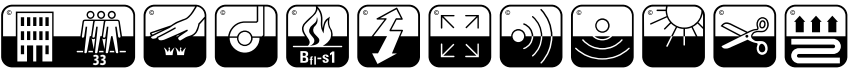
FLEXLOK

We reserve all rights for technical improvements.

ColorBeat

Technical Specifications
Spécifications techniques - Technische specificaties - Technische Spezifikationen

Construction Structure - Structuur - Konstruktion	Tufted 1/10" gauge loop	
Pile fibre composition Composition des fibres - Poolmateriaal - Material der Polnutzschicht	100% Duracolor® Premium Nylon (30% recycled content) 100% solution dyed Pa6	
Secondary backing Envers - Rug - Beschichtung	EcoFlex™ Statera (modified bitumen, 70% recycled content)	
Total weight Poids total - Totaal gewicht - Gesamtgewicht	3033 g/m²	
Pile weight Poids du velours - Pool gewicht - Poleinsatzgewicht	746 g/m²	
Surface pile weight Poids du velours utile - Effectieve poolmassa - Polnutzschichtgewicht	453 g/m²	
Total thickness Epaisseur totale - Totale dikte - Gesamtdicke	5,3 mm	
Surface pile thickness Hauteur du velours - Poolhoogte - Poldicke	2,7 mm	
Surface pile density Densité du velours - Pooldichtheid - Polrohdichte	0,168 g/cm³	
Number of tufts Nombre de touffes - Aantal noppen - Noppenzahl	224.000/m²	
Wear classification Classement d'usage - Gebruiksklasse - Beanspruchungsklasse	EN 1307	33 / LC2
Castor chair suitability Emploi chaise à roulettes - Rolstoelgeschiktheid - Stuhlrolleneignung	EN 985	A: intensive use
Fire classification Comportement au feu - Brandgedrag - Brandklasse	EN 13501-1	Bfl-s1
Dimensional stability Stabilité dimensionnelle - Dimensionele stabiliteit - Dimensionstabilität	EN 986	≤ 0,2%
Colour fastness to light Solidité des couleurs à la lumière - Lichtbestendigheid van de kleuren - Lichtechtheit	EN ISO 105-B02	≥ 7
Rubbing fastness Solidité au frottement - Wrijftechtheid - Reibechtheit	EN ISO 105-X12	≥ 4
Colour fastness to water Solidité à l'eau - Waterechtheid - Wasserechtheit	EN ISO 105-E01	≥ 4
Thermal resistance Résistance thermique - Warmtedoorlaatweerstand - Wärmedurchlasswiderstand	ISO 8302	0,059 m².K/w
Sound absorption Absorption phonique - Geluidsabsorptie - Schallabsorptionsgrad	EN ISO 354	In progress Hz α s
Impact sound reduction Réduction phonique aux bruits d'impacts - Reductie contactgeluid - Trittschallverbesserungsmaß	EN ISO 10140-3	In progress
Permanent antistatic Antistatique permanent - Permanent antistatisch - Permanent antistatisch	ISO 6356	≤ 2 kV
Transversal resistance Résistance transversale - Doorgangsweerstand - Durchgangswiderstand	ISO/DIS 10965	≤ 10⁹ Ohm
Number of colours Nombre de coloris - Aantal kleuren - Anzahl der Farben	18	
Size & Packaging Dimensions & Emballage - Formaat en verpakking - Abmessungen & Verpackung	60,96 x 60,96 cm (24" x 24") 5,2 m²/box - 20 boxes/pallet	
GUT-Prodis Number Numéro GUT Prodis - Nummer GUT Prodis - GUT-Prodis Nummer	In progress	



ColorBeat, can be installed as an accent tile, always in a combination with another standard carpet tile.

FLEXLOK

We reserve all rights for technical improvements.

Light reflection values

Lithosphere - Hydrosphere - Ecosphere - Layered Earth									
Colour nr.		138	576	739	856	869	949	955	978
LRV	L Value Y Value	In progress In progress							
ColorBeat									
Colour nr.		595	717	833	841	866	889	917	964
LRV	L Value Y Value	In progress In progress							

We reserve all rights for technical improvements.



Hydrosphere 739






Layered Earth 978





CARPET TILES

 Mohawk Group

Nijverheidslaan 29
8580 Avelgem
België
+32 56 65 32 11
www.ivc-commercial.com

BEYOND
FLOORING