

Street Thread

Taped Off • Super Fresh • Pop Icon



CARPET TILES

 Mohawk Group

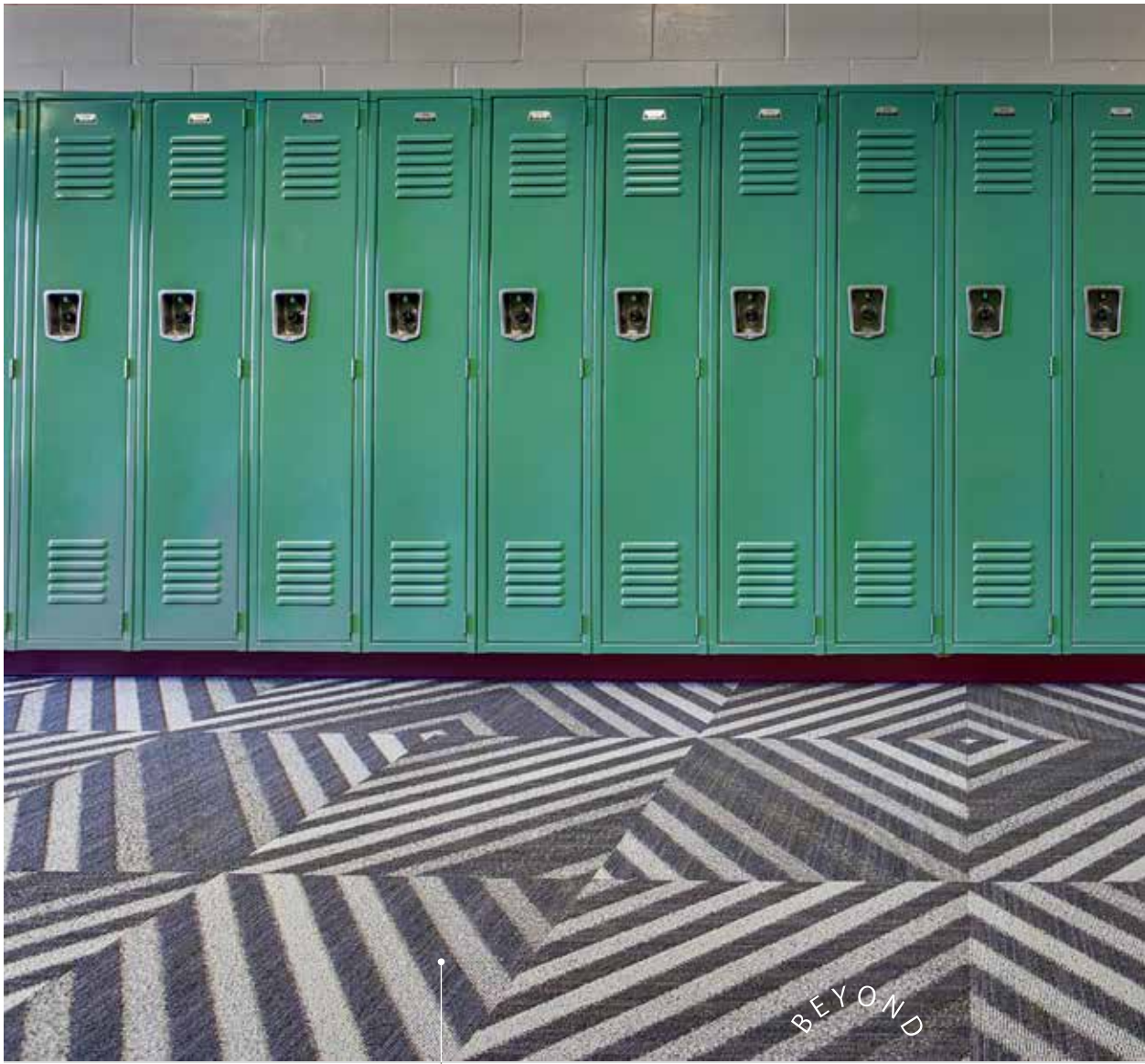
BEYOND
FLOORING

Street Thread

The Street Thread collection gives you the flexibility to define unique visual spaces in open environments. Its contrasting colours and patterns together generate street smart designs, fit for any interior. Inspired by the work of leading street artists, the collection's three designs blend bold geometric and gradient shapes into a distinctly urban, modern aesthetic. Moreover, eight coordinating ColorBeat designs add an additional splash of vibrant colour to your project, allowing your creativity to roam free.





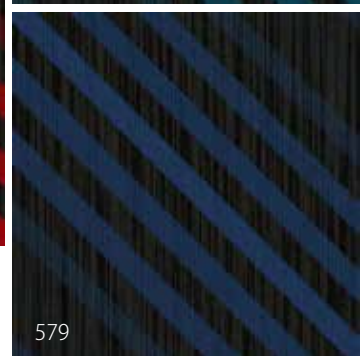
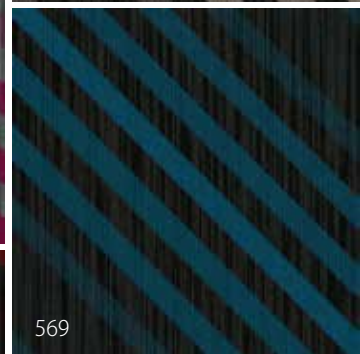
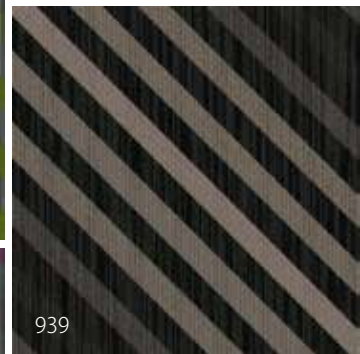
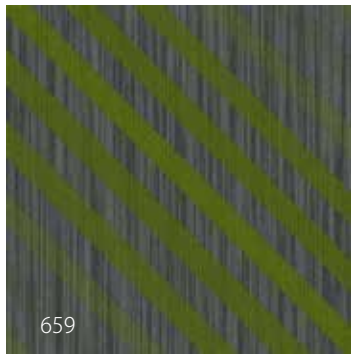
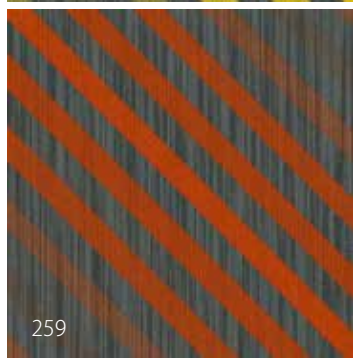


939

BEYOND
FLOORING

Taped Off

A broken striated pattern with a fading, graphic, linear overlay.





BEYOND
FLOORING

Super Fresh 569

Pop Icon 569

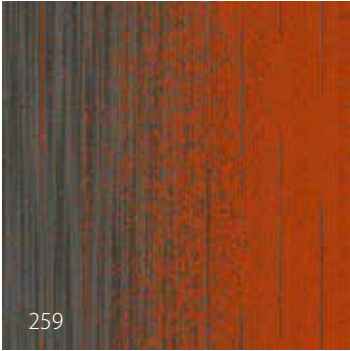
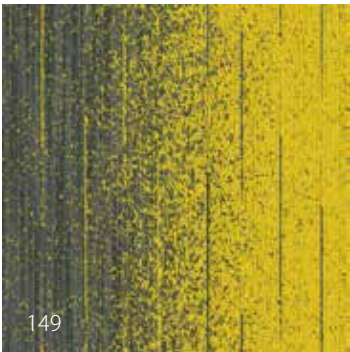
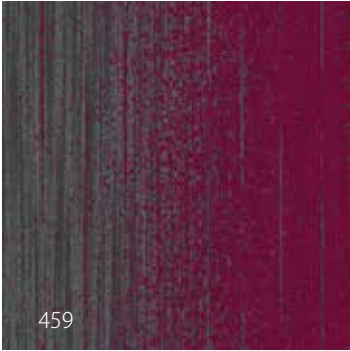
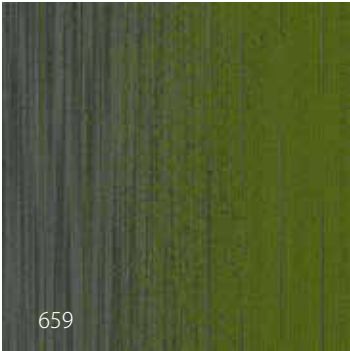
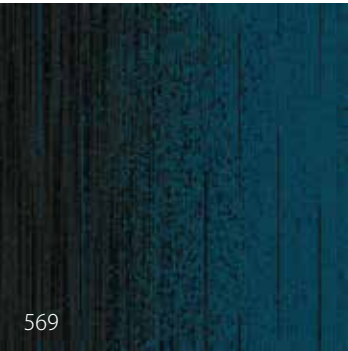
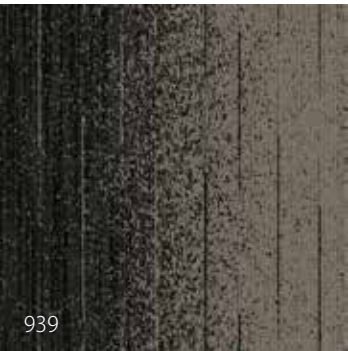


Super Fresh

A broken filigree script pattern, combining elegance with edginess.

Pop Icon

A linear pattern with a sleek gradient fade, reminiscent of broken brush strokes.



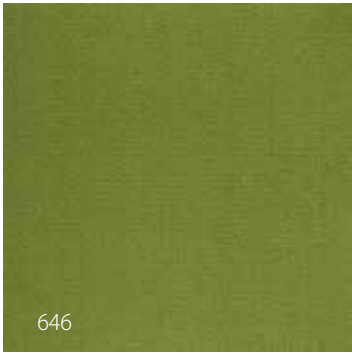


○
149

○
939



BEYOND
FLOORING



ColorBeat

Go for an eye-catching floor by combining your favourite carpet tile with a ColorBeat accent, border or inset tile. ColorBeat textured tiles come in 18 solid colours, giving you ultimate creative freedom.

Remark: can be installed as an accent tile only, always in a combination with another standard carpet tile



ColorBeat 453



Taped Off 459



About Street Thread

top-quality yarn and innovative secondary backing

Only the best is good enough for the Street Thread collection: Duracolor yarns and an EcoFlex NXT backing guarantee impeccable products that last a lifetime.

duracolor

Raising the bar for high-performing carpet tiles in all rooms and projects, Duracolor nylon combines stain resistance and sustainability with timeless beauty.



Performance

- Resistant to 99% of all stains thanks to permanent built-in protection



Sustainability

- 30% recycled content: 25% pre-consumer and 5% post-consumer
- Extended product life reduces environmental impact



Forever beautiful

- Lasting colours: unsurpassed fastness to light and atmospheric toxins
- Proven track record of 20 years: originally patented by Mohawk in 1991



EcoFlex™ NXT

EcoFlex NXT backing is 40% lighter than similar PVC-products, and thus easier to install and less expensive to ship. Incorporating a minimum of 35% recycled content, the backing is a showpiece of sustainable design.



Performance

- Dimensional stability at the best
- Prevents moisture damage from spills and cleaning
- Superior tuft bind: resistant to edge ravel
- Moisture conditions not to exceed 99% rH
- 40% Lighter than a normal standard backing



Sustainability

- No plasticisers or PVC
- Minimum of 35% pre-consumer recycled content



Certification

- Gold level certified in accordance with NSF/ANSI 140
- CRI Green Label Plus certified





About IVC

IVC is the commercial branch of IVC Group, dedicated to creating unique floors for housing, retail, hospitality and leisure, office, healthcare and education projects. Founded in 1997, IVC Group is Europe's leading manufacturer of luxury vinyl tiles (LVT), sheet vinyl and carpet tiles. With 1,600 employees and 8 production units in Belgium, Luxembourg and the United States, IVC Group produces over 120 million m² of flooring per year.

As of 2015, IVC Group grows under the wings of Mohawk Industries Inc, the world's market leader in all things flooring, with a heritage of craftsmanship that spans more than 130 years. This broadens IVC's global reach – bringing us closer to you, wherever you go.

LVT

IVC's broad range of carpet tiles allows you to create unique floors that light up every room. But the ultimate way to take your project to new heights is combining different products into that one special look. That's why IVC offers a variety of LVT, which can easily be mixed and matched with carpet tiles. Ranging from neutral shades and refined visuals to carefully chosen patterns and bright colours, our LVT floors offer you endless design potential.



Easy installation

Flawless combinations

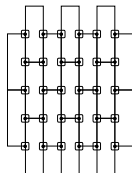
Finding the right floor for your project is one thing, but installing it can be a cumbersome process. Not to worry: IVC hands you the tools to ease this step. On top of that, our broad portfolio of 100% in-house designed LVT perfectly blends with our carpet tiles, to create that unique look you've always imagined.

FLEXLOK

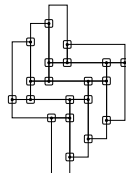
The innovative FlexLok system is the ideal alternative to traditional adhesive installation methods. The odorless dry technique virtually eliminates harmful VOCs and can be used on all underlays, for all IVC carpet tiles. Rely on FlexLok for a fast, easy installation of flexible, floating floors, without any glue. Moreover, the FlexLok system is Declare, HPD & DRI Green label certified.

INSTALLING PLANKS

Lay the first row of planks and put FlexLok pads at each joint, adhesive side up. Install the remaining carpet tiles, placing FlexLok tabs as illustrated in the image.



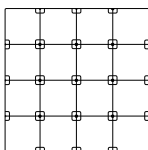
For herringbone designs, put FlexLok pads on each corner, adhesive side up.



INSTALLING TILES

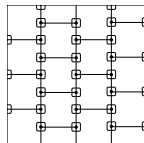
Quarter turn, monolithic, and multi-directional

Put FlexLok pads at each corner of the tiles, adhesive side up.



Brick and Ashlar

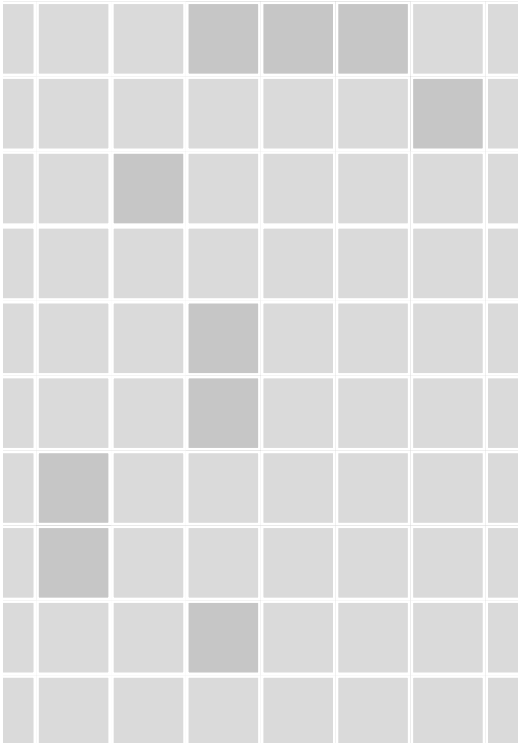
Lay the first row of planks and put FlexLok pads at each joint, adhesive side up. Install the remaining carpet tiles, placing FlexLok tabs as illustrated in the image.



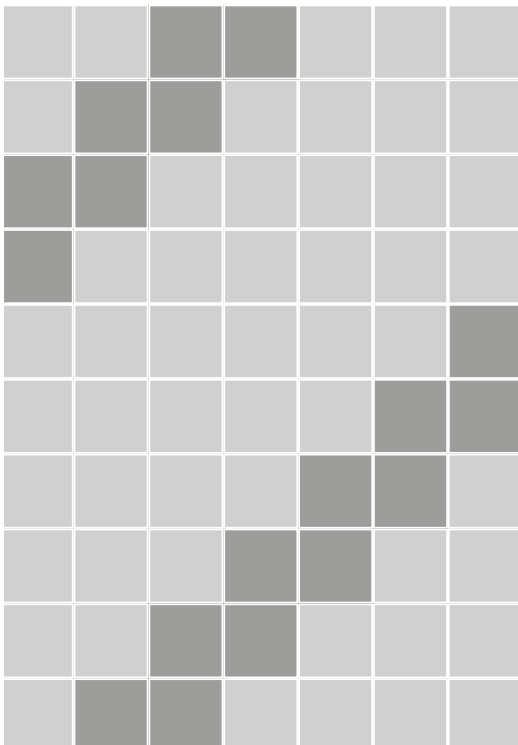
Get inspired



Super Fresh 569 - Pop Icon 569

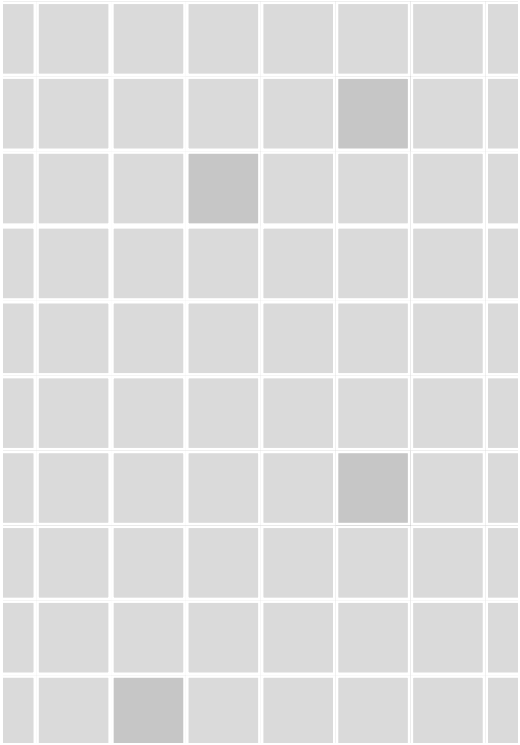


Pop Icon 149 - 939

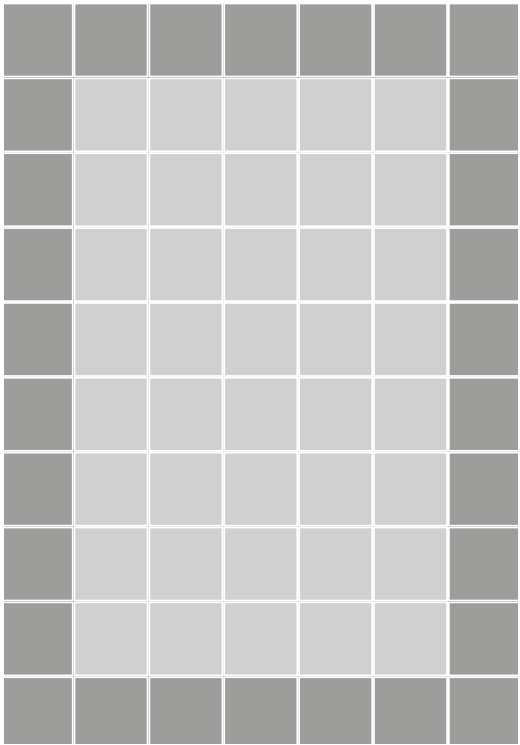




Taped Off 939 - Pop Icon 939



Pop Icon 149 - 939



Taped Off

Technical Specifications

Spécifications techniques - Technische specificaties - Technische Spezifikationen

Construction Structure - Structuur - Konstruktion		Tufted 1/12" gauge loop						
Pile fibre composition Composition des fibres - Poolmateriaal - Material der Polnutschicht		100% Duracolor® Premium Nylon (30% recycled content) 43% solution dyed 57% space dyed Pa6						
Secondary backing Envers - Rug - Beschichtung		EcoFlex™ NXT (35% recycled content)						
Total weight Poids total - Totaal gewicht - Gesamtgewicht		3150 g/m²						
Pile weight Poids du velours - Pool gewicht - Poleinsatzgewicht		780 g/m²						
Surface pile weight Poids du velours utile - Effectieve poolmassa - Polnutschichtgewicht		490 g/m²						
Total thickness Epaisseur totale - Totale dikte - Gesamtdicke		5,5 / 6,5 mm						
Surface pile thickness Hauteur du velours - Poolhoogte - Poldicke		2,9 / 3,9 mm						
Surface pile density Densité du velours - Pooldichtheid - Polrohddichte		0,147 g/cm³						
Number of tufts Nombre de touffes - Aantal noppen - Noppenzahl		216.200/m²						
Wear classification Classement d'usage - Gebruiksklasse - Beanspruchungsklasse	EN 1307	33 / LC2						
Castor chair suitability Emploi chaise à roulettes - Rolstoelgeschiktheid - Stuhlrolleneignung	EN 985	A: intensive use						
Fire classification Comportement au feu - Brandgedrag - Brandklasse	EN 13501-1	Bfl-s1						
Dimensional stability Stabilité dimensionnelle - Dimensionele stabiliteit - Dimensionstabilität	EN 986	≤ 0,2%						
Colour fastness to light Solidité des couleurs à la lumière - Lichtbestendigheid van de kleuren - Lichtechtheit	EN ISO 105-B02	≥ 5-6						
Rubbing fastness Solidité au frottement - Wrijftechtheid - Reibechtheit	EN ISO 105-X12	≥ 4						
Colour fastness to water Solidité à l'eau - Waterechtheid - Wasserechtheit	EN ISO 105-E01	≥ 4						
Thermal resistance Résistance thermique - Warmtedoorlaatweerstand - Wärmedurchlasswiderstand	ISO 8302	0,068 m².K/w						
Sound absorption Absorption phonique - Geluidsabsorptie - Schallabsorptionsgrad	EN ISO 354	0,15 αs Hz 125 250 500 1000 2000 4000 αs 0,00 0,06 0,07 0,14 0,32 0,35						
Impact sound reduction Réduction phonique aux bruits d'impacts - Reductie contactgeluid - Trittschallverbesserungsmaß	EN ISO 10140-3	ΔLw = 25 dB						
Permanent antistatic Antistatique permanent - Permanent antistatisch - Permanent antistatisch	ISO 6356	≤ 2 kV						
Transversal resistance Résistance transversale - Doorgangsweerstand - Durchgangswiderstand	ISO/DIS 10965	≤ 10⁹ Ohm						
Number of colours Nombre de coloris - Aantal kleuren - Anzahl der Farben	8							
Size & Packaging Dimensions & Emballage - Formaat en verpakking - Abmessungen & Verpackung	60,96 x 60,96 cm (24" x 24") 6,69 m²/box - 20 boxes/pallet							
GUT-Prodis Number Numéro GUT Prodis - Nummer GUT Prodis - GUT-Prodis Nummer	In progress							

We reserve all rights for technical improvements.

Super Fresh

Technical Specifications

Spécifications techniques - Technische specificaties - Technische Spezifikationen

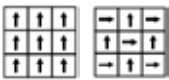
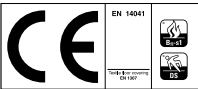
Construction Structure - Structuur - Konstruktion		Tufted 1/12" gauge loop						
Pile fibre composition Composition des fibres - Poolmateriaal - Material der Polnutschicht		100% Duracolor® Premium Nylon (30% recycled content) 50% solution dyed 50% space dyed Pa6						
Secondary backing Envers - Rug - Beschichtung		EcoFlex™ NXT (35% recycled content)						
Total weight Poids total - Totaal gewicht - Gesamtgewicht		3150 g/m²						
Pile weight Poids du velours - Pool gewicht - Poleinsatzgewicht		780 g/m²						
Surface pile weight Poids du velours utile - Effectieve poolmassa - Polnutschichtgewicht		508 g/m²						
Total thickness Epaisseur totale - Totale dikte - Gesamtdicke		6 mm						
Surface pile thickness Hauteur du velours - Poolhoogte - Poldicke		3,4 mm						
Surface pile density Densité du velours - Pooldichtheid - Polrohndichte		0,148 g/cm³						
Number of tufts Nombre de touffes - Aantal noppen - Noppenzahl		216.200/m²						
Wear classification Classement d'usage - Gebruiksklasse - Beanspruchungsklasse	EN 1307	33 / LC2						
Castor chair suitability Emploi chaise à roulettes - Rolstoelgeschiktheid - Stuhlrolleneignung	EN 985	A: intensive use						
Fire classification Comportement au feu - Brandgedrag - Brandklasse	EN 13501-1	Bfl-s1						
Dimensional stability Stabilité dimensionnelle - Dimensionele stabiliteit - Dimensionstabilität	EN 986	≤ 0,2%						
Colour fastness to light Solidité des couleurs à la lumière - Lichtbestendigheid van de kleuren - Lichtechtheit	EN ISO 105-B02	≥ 5-6						
Rubbing fastness Solidité au frottement - Wrijftechtheid - Reibechtheit	EN ISO 105-X12	≥ 4						
Colour fastness to water Solidité à l'eau - Waterechtheid - Wasserechtheit	EN ISO 105-E01	≥ 4						
Thermal resistance Résistance thermique - Warmtedoorlaatweerstand - Wärmedurchlasswiderstand	ISO 8302	0,066 m².K/w						
Sound absorption Absorption phonique - Geluidsabsorptie - Schallabsorptionsgrad	EN ISO 354	0,15 αs Hz 125 250 500 1000 2000 4000 αs 0,00 0,07 0,09 0,11 0,29 0,36						
Impact sound reduction Réduction phonique aux bruits d'impacts - Reductie contactgeluid - Trittschallverbesserungsmaß	EN ISO 10140-3	ΔLw = 24 dB						
Permanent antistatic Antistatique permanent - Permanent antistatisch - Permanent antistatisch	ISO 6356	≤ 2 kV						
Transversal resistance Résistance transversale - Doorgangsweerstand - Durchgangswiderstand	ISO/DIS 10965	≤ 10⁹ Ohm						
Number of colours Nombre de coloris - Aantal kleuren - Anzahl der Farben	8							
Size & Packaging Dimensions & Emballage - Formaat en verpakking - Abmessungen & Verpackung	60,96 x 60,96 cm (24" x 24") 6,69 m²/box - 20 boxes/pallet							
GUT-Prodis Number Numéro GUT Prodis - Nummer GUT Prodis - GUT-Prodis Nummer	In progress							

We reserve all rights for technical improvements.

Pop Icon

Technical Specifications
Spécifications techniques - Technische specificaties - Technische Spezifikationen

Construction Structure - Structuur - Konstruktion	Tufted 1/12" gauge loop	
Pile fibre composition Composition des fibres - Poolmateriaal - Material der Polnutschicht	100% Duracolor® Premium Nylon (30% recycled content) 50% solution dyed 50% space dyed Pa6	
Secondary backing Envers - Rug - Beschichtung	EcoFlex™ NXT (35% recycled content)	
Total weight Poids total - Totaal gewicht - Gesamtgewicht	3150 g/m²	
Pile weight Poids du velours - Pool gewicht - Poleinsatzgewicht	780 g/m²	
Surface pile weight Poids du velours utile - Effectieve poolmassa - Polnutschichtgewicht	504 g/m²	
Total thickness Epaisseur totale - Totale dikte - Gesamtdicke	6,1 mm	
Surface pile thickness Hauteur du velours - Poolhoogte - Poldicke	3,5 mm	
Surface pile density Densité du velours - Pooldichtheid - Polrohndichte	0,144 g/cm³	
Number of tufts Nombre de touffes - Aantal noppen - Noppenzahl	206.800/m²	
Wear classification Classement d'usage - Gebruiksklasse - Beanspruchungsklasse	EN 1307	33 / LC2
Castor chair suitability Emploi chaise à roulettes - Rolstoelgeschiktheid - Stuhlrolleneignung	EN 985	A: intensive use
Fire classification Comportement au feu - Brandgedrag - Brandklasse	EN 13501-1	Bfl-s1
Dimensional stability Stabilité dimensionnelle - Dimensionele stabiliteit - Dimensionstabilität	EN 986	≤ 0,2%
Colour fastness to light Solidité des couleurs à la lumière - Lichtbestendigheid van de kleuren - Lichtechtheit	EN ISO 105-B02	≥ 5-6
Rubbing fastness Solidité au frottement - Wrijftechtheid - Reibechtheit	EN ISO 105-X12	≥ 4
Colour fastness to water Solidité à l'eau - Waterechtheid - Wasserechtheit	EN ISO 105-E01	≥ 4
Thermal resistance Résistance thermique - Warmtedoorlaatweerstand - Wärmedurchlasswiderstand	ISO 8302	0,066 m².K/W
Sound absorption Absorption phonique - Geluidsabsorptie - Schallabsorptionsgrad	EN ISO 354	0,15 αs Hz 125 250 500 1000 2000 4000 αs 0,00 0,05 0,08 0,13 0,28 0,39
Impact sound reduction Réduction phonique aux bruits d'impacts - Reductie contactgeluid - Trittschallverbesserungsmaß	EN ISO 10140-3	ΔLw = 28 dB
Permanent antistatic Antistatique permanent - Permanent antistatisch - Permanent antistatisch	ISO 6356	≤ 2 kV
Transversal resistance Résistance transversale - Doorgangsweerstand - Durchgangswiderstand	ISO/DIS 10965	≤ 10⁹ Ohm
Number of colours Nombre de coloris - Aantal kleuren - Anzahl der Farben	8	
Size & Packaging Dimensions & Emballage - Formaat en verpakking - Abmessungen & Verpackung	60,96 x 60,96 cm (24" x 24") 6,69 m²/box - 20 boxes/pallet	
GUT-Prodis Number Numéro GUT Prodis - Nummer GUT Prodis - GUT-Prodis Nummer	In progress	



FLEXLOK

We reserve all rights for technical improvements.

ColorBeat

Technical Specifications
Spécifications techniques - Technische specificaties - Technische Spezifikationen

Construction Structure - Structuur - Konstruktion	Tufted 1/10" gauge loop	
Pile fibre composition Composition des fibres - Poolmateriaal - Material der Polnutschicht	100% Duracolor® Premium Nylon 100% solution dyed Pa6	
Secondary backing Envers - Rug - Beschichtung	EcoFlex™ NXT (35% recycled content)	
Total weight Poids total - Totaal gewicht - Gesamtgewicht	3033 g/m²	
Pile weight Poids du velours - Pool gewicht - Poleinsatzgewicht	746 g/m²	
Surface pile weight Poids du velours utile - Effectieve poolmassa - Polnutschichtgewicht	453 g/m²	
Total thickness Epaisseur totale - Totale dikte - Gesamtdicke	5,3 mm	
Surface pile thickness Hauteur du velours - Poolhoogte - Poldicke	2,7 mm	
Surface pile density Densité du velours - Pooldichtheid - Polrohndichte	0,168 g/cm³	
Number of tufts Nombre de touffes - Aantal noppen - Noppenzahl	224.000/m²	
Wear classification Classement d'usage - Gebruiksklasse - Beanspruchungsklasse	EN 1307	33 / LC2
Castor chair suitability Emploi chaise à roulettes - Rolstoelgeschiktheid - Stuhlrolleneignung	EN 985	A: intensive use
Fire classification Comportement au feu - Brandgedrag - Brandklasse	EN 13501-1	Bfl-s1
Dimensional stability Stabilité dimensionnelle - Dimensionele stabiliteit - Dimensionstabilität	EN 986	≤ 0,2%
Colour fastness to light Solidité des couleurs à la lumière - Lichtbestendigheid van de kleuren - Lichtechtheit	EN ISO 105-B02	≥ 7
Rubbing fastness Solidité au frottement - Wrijfechtheid - Reibechtheit	EN ISO 105-X12	≥ 4
Colour fastness to water Solidité à l'eau - Waterechtheid - Wasserechtheit	EN ISO 105-E01	≥ 4
Thermal resistance Résistance thermique - Warmtedoorlaatweerstand - Wärmedurchlasswiderstand	ISO 8302	0,059 m².K/W
Sound absorption Absorption phonique - Geluidsabsorptie - Schallabsorptionsgrad	EN ISO 354	In progress Hz α s
Impact sound reduction Réduction phonique aux bruits d'impacts - Reductie contactgeluid - Trittschallverbesserungsmaß	EN ISO 10140-3	In progress
Permanent antistatic Antistatique permanent - Permanent antistatisch - Permanent antistatisch	ISO 6356	≤ 2 kV
Transversal resistance Résistance transversale - Doorgangsweerstand - Durchgangswiderstand	ISO/DIS 10965	≤ 10⁹ Ohm
Number of colours Nombre de coloris - Aantal kleuren - Anzahl der Farben	18	
Size & Packaging Dimensions & Emballage - Formaat en verpakking - Abmessungen & Verpackung	60,96 x 60,96 cm (24" x 24") 6,69 m²/box - 20 boxes/pallet	
GUT-Prodis Number Numéro GUT Prodis - Nummer GUT Prodis - GUT-Prodis Nummer	In progress	



ColorBeat, can be installed as an accent tile, always in a combination with another standard carpet tile.

FLEXLOK



Light reflection values

Taped Off - Super Fresh - Pop Icon

Colour nr.	149	259	379	459	569	579	659	939
LRV	L Value Y Value	In progress In progress						

ColorBeats

Colour nr.	121	252	353	453	546	555	646	917
LRV	L Value Y Value	In progress In progress						

We reserve all rights for technical improvements.



Taped Off 459 - ColorBeat 453



CARPET TILES

 Mohawk Group

Nijverheidslaan 29
8580 Avelgem
België
+32 56 65 32 11
www.ivc-commercial.com

BEYOND
FLOORING