

Scope: Installation instruction glued heterogenous Sheet Vinyl IVC

This instruction provides you with the most important requirements before, during and after the installation of your sheet vinyl floor covering. To obtain the best results, fulfill our Sales Terms & Conditions and product warranty clauses, these instructions must be carefully adhered to by all parties. Should more stringent local regulations, standards, and/or practices be present, then our T&C and warranty clauses will only be valid when the stricter requirements are followed. We do not accept any warranty claims when incorrect storage, handling, installation, usage, caused by bad maintenance, damage or by stains.

1. Suitability

The choice of floor covering is key to a best user experience. The chosen sheet vinyl floor covering fulfills the requirements of the standards and specifications as noted in the technical datasheets.

Proper installation of the flooring requires experience and knowledge to ensure the best results. Unilin offers training at the training academy or potential support from our technical services engineers on demand. At all times ensure you use correct protective ergonomic safety clothing and measures. Products with textile backing need installation with gloves.

Generic conditions for a fully adhered (glued) sheet vinyl floor covering:

- Sheet vinyl floor coverings are designed for indoor installation only.
- Do not pinch in the floor covering or use glues on top of the vinyl to fix furniture or other.
- Avoid storing the floor covering in conditions of intense moisture or humidity.
- The flooring must not be installed in very humid areas and may not be installed over built-in floor drains. It is essential to avoid the ingress and accumulation of water under or on the floor covering. Installation to “wet rooms”, including shower floors, must only be undertaken using flooring certified for use in such areas, and ensuring the specific “wet room” installation guide is followed.
- Sheet Vinyl flooring can be more sensitive to over/underexposure of natural light, causing discoloration or color differences within one room. Please foresee sufficient daylight with protected sunscreens.
- Do not install in areas exposed to extremely high or low temperatures (such as but not limited to solariums, seasonal porches, pool, wellness and saunas, non-heated rooms). The post-installation room temperature is preferably between 6-30°C and an absolute min-max of 0-45°C. Installation to areas with elevated temperatures or elevated temperature variations, we recommend the use of suitable subfloor preparation and adhesive.
- Installation of the flooring to rooms where roller / caster chairs, or other sliding / rolling items are used, the flooring must be fully adhered with a suitable adhesive.
- The flooring can be installed on concrete, cement, anhydrite (calcium sulphate), timber, plywood, particle board and ceramic tiles, raised access floors with suitable preparation. A suitable preparation includes the usage of suitable primer and self-leveling underlayment in minimal thickness of 2 – 3 mm. Do not install oil, wax, or other treated / contaminated subfloors. Depending on the technical datasheet, some sheet vinyl subfloors can be overlaid with sheet vinyl floor covering, after suitable cleaning and preparation, but avoid installation over an acoustic / soft sheet vinyl or carpet subfloor to reduce additional / increased post installation indentation. Do not place adhered or glued vinyl over asbestos having subfloors.
- IVC Solution applications are very particular. It is essential that the subfloor is stable, permanently dry, and fully flat and the direction / orientation requirements during installation are followed. Ensure you order only 2m rolls and follow the installation direction / orientation, batch and roll numbering for a project to avoid coloration and print differences.
- The flooring can be used on water based underfloor heating and/or cooling systems. Recommended setting the heating or cooling temperature to +5°C/-5°C compared to the original room temperature. At all times, the subfloor surface temperature must not exceed 29°C (EN1264-partII) and not go below the dew point. Installation is not advised on electrical or infrared heat foil underfloor heating systems.
- All sheet vinyl floor coverings are fully suitable for glued and cold-welding application. Prior to the installation, the suitability of the subfloor as well as choice of suitable adhesives is key to a good result.

2. Reception, storage and internal transport

a. Reception and unloading

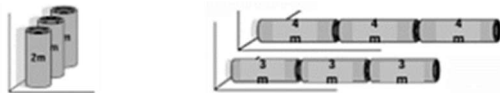
- Verify the delivered goods match with the ordered quantity, product type and dimensions. 24h after reception no claims will be accepted for first reception misses.
- When unloading, be careful not to damage the rolls. Unload large shipments or containers, with a mandrel forklift or pole hyster. Damaged goods upon reception need to be registered on the transportation documents (CMR).
- When transporting them to a warehouse, please use proper equipment.



b. Storage

Warning: Stacking rolls risks injuring / harming people, the surrounding environment and the product itself.

- The flooring material must be stored between 2°C and 35°C, in a ventilated or air-conditioned area (humid free internal location) to reduce the risk of condensation and potentially permanent damage to your product.
- Store the rolls in a vertical position (2m rolls). Top of roll is shown on the roll label.
- When it is not possible to store vertically (4m rolls), storing in horizontal position is allowed. Added precautions: do not stack one roll and rotate regularly, we recommend every 3- 4 day, to minimize pressure marks. Ensure installation period is as close by upon the reception of goods. Optimal storage periods are 6-12 months. Ensure labels are visible in the storage area.



c. Acclimatization before installation

Warning: incorrect storage or acclimatization might result in permanent storage marks.

- Sheet vinyl floor coverings must be acclimatized prior to install, for 24h to 48h, in the install room or area with similar conditions. As a generic rule the acclimatization conditions shall be as close as possible as the conditions during the installation procedure. Recommended keeping the installation climatic conditions between 15°C-30°C and up to maximum 75% RH. Keep away from continuous direct sunlight, heating or cooling installations, to achieve gradual acclimatization.
- 2m width: cut to sheets and roll back in a loosened way. Store upright for acclimatization. Do not roll in the opposite way as per the delivered roll direction to avoid storage marks.
- 4m width: cut to sheet size & lay flat to acclimatize. Do not fold your cut lengths.
- Rough cut your lengths, including a margin of 5-10 cm, allowing for coving if needed. This allows correct wall and joint alignment.
- When after climatization the rigidity of the sheet or lengths is not best, soft massaging of the sheets reduces tension and waving.

3. Prior to Installation

a. Visual inspection

Warning: Installing a floor covering with visible defects constitutes acceptance of its quality, and no claims about such defects will be considered after installation.

- Always check the product, prior to installation, from a normal viewing distance (2m and 45° angle), with natural light or room intended light sources (no spots, temporary, or construction site lights).
- Check material for any visible damage, defects, print or color variation within the rolls.
- Verify that the materials received match those ordered for correctness of design / type, batch (one color bath), and the direction / orientation of installation needed.
- Retain your roll labels, for all rolls, until installation is complete and accepted.

b. Preparation of installation

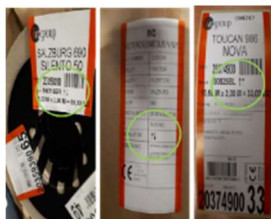
Matrix setup

- Measure maximum width and length of the room, including buffer for recess, corners and doorways.
- Start from the wall towards the door opening. Verify the room design and pattern schedule upfront and avoid coincidence of seams with doorways, main traffic passages, castor chair areas. Keep patterns in mind, like wood plank design with a displacement at seams/joints ~10cm. Recommended positioning vinyl seams parallel and not across traffic areas or doorways.
- If the room is reasonably square, the lengths should run parallel to the incoming light or aligned with the dominant wall. In long, narrow rooms it is best to install the lengths along the length of the room. For hallways, both options to install perpendicular or in line with the corridor direction are possible. Note minimizing seams will usually provide a better result. The balance between visual aspect and consumption of installed material should be considered. Respect greyscale EN20105-A02 (Germany only).
- Do not reuse smaller offcuts into the final flooring without assuring pattern and color variation.
- Balance your pattern to avoid ending up with small strips to complete the area size.

Roll sequence and direction of vinyl

- Do not use multiple batches in one room, as not respecting the roll sequence or color batch (different production bath) will cause color variation.
- Do respect the predefined orientation of your sheet vinyl roll, shown on the roll label. Indication will predefine the way of installing adjacent lengths to enable correct visual quality. Incorrect orientation or excessive use of sub cuts (small cuts or offcuts) will cause color variation. Please be aware that indications on the back of the vinyl itself, represent the direction of the roll production.
- The generic rules for layorientation of 4m roll cuts are less critical. There will be no L or R indication as such. For optimal design repeat aesthetics follow the arrow lay orientation on the roll label.
- For 2-3m rolls, due to the split from a 4m roll to a 2-3m roll the lay orientation is important.
 - For woods and silver product design types, the delivered rolls per batch L and R can be mixed, but keep in mind to have always the same lay direction used.
 - For uni designs or rollover, it is important to alternate the lay direction and not to mix R/L indications (eg 250501AL+250501AR = NOK) in an installation.

↓ ↑ The same direction of the arrow or ↓ ↑ alternate direction of arrow is also shown on the roll label. If opposite arrows, turn your adjacent cut from the same roll 180° compared to the earlier cut length.



Batch mixture on invoice/ Arrow on label	Mix A/B ABABAB BABABA	No mix only AA or BB AAAAA BBBBB
↑↑	Follow label ↑↑	Invert vs label ↓↑
↓↑	Invert vs label ↑↑	Follow label ↓↑

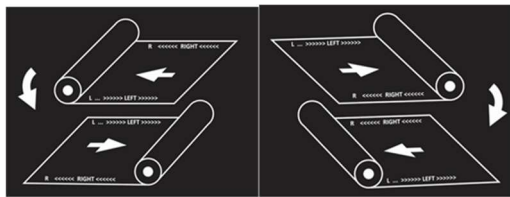


A BRAND OF
UNILIN

Vinyl on a roll

Roll sequence and direction of vinyl (materials labeled as Lentex Flooring)

- Do not use multiple batches in one room, as not respecting the roll sequence or color batch (different production bath) will cause color variation.
- Only for the commercial floors covering, on the reverse side, the manufacturer places information marking showing, amongst others, the length and batch of the floor covering, and specifying the right and left edges of the material:
 - right edge: single letter R and word RIGHT
 - left edge: single letter L and word LEFT.
- During installation pay attention so that marked edges of individual sheets be next to one another according to the pattern: **L-L (LEFT-LEFT) R-R (RIGHT-RIGHT)**



Size cutting for final install.

- Unroll the roll using an unrolling barrow / trolley. Do not fold the vinyl.
- Do not write on the back of the vinyl except with a pencil. Do not use post-it® or any other marking tape on the back of the vinyl, surely no adhesives having color or solvents.
- Cut the lengths gradually to precise dimensions. Several small trimming cuts will be more efficient for correctness. Otherwise use a trim ruler to cut lengths. Hold the cutting knife perpendicular to the floor for a straight cut finish.
- Once placed into the final position into the room, foresee margin of 1 mm for skirting boards, this to avoid buckling or allow for normal movement of the sheet vinyl floor covering. (1mm usually equals the screed or subfloor dilution gap).



4. Subfloor preparation

Warnings:

- Subfloor type, quality, and subfloor system preparation affect the result.
- Knowledge and acceptance, by the contractor or installer, of the quality, suitability, and composition of the final subfloor system condition is key prior to installation.
- **Always measure with certified and calibrated equipment (moisture reading, temperature, air humidity, etc), keep proof of your subfloor and environmental measurements.** If no pre-installation subfloor moisture and environmental readings are available to verify that pre-installation conditions met the requirements of the installation instructions / required standards, no warranty claims will be accepted.

a. subfloor prerequisites

- Install a heterogeneous sheet vinyl floor covering directly on the suitable prepared subfloor. Never use an added underfloor as separate acoustic underlay. For acoustic optimization, verify the product portfolio of foamed product types.
- Always remove all residual adhesives and smoothing compound residues.
- Local regulations and standards are to be strictly followed for moisture content of the subfloor.

FR: DTU 53-12 (2020) Préparation des supports sols souples

DE: DIN 18356 „Bodenbelagarbeiten“ + DIN 18202 „Ebenheitstoleranzen im Hochbau“

BE: WTCB TV 241

IVC BV

Nijverheidslaan 29
8580 Avelgem - Belgium
BTW BE 0866.6892.231

ivc.info@unilin.com
unilin.com

T +32 56 65 32 11



A BRAND OF
UNILIN

Vinyl on a roll

- In case the national standard or regulations conflicts with the manufacturer's recommendation, the most stringent prevails. PH and surface absorbency test recommended for Nordics, UK, Australia, New-Zealand ... Some examples of prescribed conditions:

Country/ Subfloor type	Unheated	Underfloor heated
IVC recommendation		
Cementous screed, sand, monolith	< 2.0 CM% - 75% RH	< 1.8 CM% - 75% RH
Concrete	< 3.0 WMC% - 75% RH	< 2.0 WMC% - 75% RH
Wood	< 10.0 WMC% - 75% RH	< 6.0 WMC% - 75% RH
Anhydrite (Calcium sulphate)	< 0.5 CM% - 75% RH	< 0.3 CM% - 75% RH
Regional exceptions:		
France		
Cementous screed, concrete, sand, monolith	<4.0 CM% at 4 cm depth CM% test* - 75% RH	<4.0 CM% - 75% RH
Anhydrite	< 0.5 CM% - 75% RH	
Italy		
Cementous screed, concrete, sand, monolith	<2.0 CM% - 75% RH	< 1.7 CM% - 75% RH
Anhydrite (Calcium sulphate)	< 0.5 CM% - 75% RH	< 0.2 CM% - 75% RH
Germany		
DIN 18365 Code of Practice		
Australia/New-Zealand		
Cementous screeds	AUS AS 1884:2021, ASTM F2170 and NZS AS 1884:2013 <2.4 CM% - 80% RH + test probe at depth of 40% thickness of slab for one side drying or 20% for top and bottom drying.	
United Kingdom		
Additional: BS 8203 / BS8204-7 Hygrometer test > July 2024 < 85% RH at 40% thickness depth of slab (smallest slab thickness 100mm); else unheated <75%, heated <65% RH. Wood both unheated and heated underfloor at <10% WMC		
China, Japan, Korea		
<4.5 CM% at 4 cm depth calcium-carbide test* <20% unheated and 10% heated underfloor RH		
Brazil		
< 2.5 CM%		



A BRAND OF
UNILIN

Vinyl on a roll

Warning: Moisture content of the subfloor can turn out to be higher depending on the climate conditions. The subfloor must be sufficiently dry.

For cement subfloor moisture measurements >2.0% we advise, and for measurements, exceeding our or the country's standard requirements, the use of a surface applied damp proofing membrane (DPM) is mandatory. For anhydrite subfloors we never recommend the use of a surface applied, but advice to wait with the installation till conditions are suitable.

For concrete and stone subfloors without a structural damp proof membrane and that are in direct contact to the earth, always check with membrane manufacturer for suitability. Use moisture proof primer and self-levelling compound. In case of public utility buildings, for floor coverings without factory protective coating, preserve them with a 2-component polyurethane epoxy-resin-system (EP), as it is the basic condition for pursuing the warranty claims.

- The table below gives the minimum number of moisture measurements needed for your installation area / size. When installing full floors in a building, ensure every level and room is verified. Digital calibrated tools allow for measurement of all rooms and each corner. CM%-bottle is a more conclusive method, as such we request to respect local regulations:

Surface	France	Italy	Belgium	Switzerland/Ostrich	Australia/New-Zealand
	At 4cm	At full depth	At full depth	At full depth	At 40% of slab
0-100m ²	1	1	2 per 100m ²	1 or 2	3
100-500m ²	2	3		+1 per 200m ²	+1 per 100m ²
>500m ²	+1 per 500m ²	5			
>800m ²		8			

- Sheet vinyl adhered floor coverings require a subfloor that is:
 - Fit for purpose, solid, self-supporting and without screed cracks. Cracks in the screed shall be bonded by a special resin.
 - Smooth and flat. Expansion and construction joints must not be filled or covered. Special profiles might be needed.
 - Treat with proper moisture barrier (primers), filling primer or levelling compound for porous subfloors or uneven subfloors.
 - Stable, not prone to extraction, contraction or floor movement.
 - Clean, permanently dry, and dust free.
 - Free from oil, wax, chemical substances, solvent based products, paints, mastic, fat, grease, ...
 - Do not use markers, pens or paints with solvents or marking tape on the subfloor or on the vinyl.
 - Treated with proper moisture barrier (surface damp proof membrane).
 - The manufacturer allows the installation of the material on raised access floors or wood-based panels (OSB, MFP) seeing the following conditions of installation:
 - wood-based panel placed directly on the proper screed or cleaned ceramic tiles,
 - irrespective of the type of wood-based panel used, cover its surface with a cut-off agent whose task is to isolate and prevent moisture migration between the layers of the substrate,
 - joints between the panels and fixing areas should be smoothed and sanded to avoid panels curling.
 - cover the entire surface with a specialized levelling compound (e.g., a self-levelling compound intended for OSB, MFP or wood intended for use under flexible floor coverings).



A BRAND OF
UNILIN

Vinyl on a roll

b. Irregularities

- Never install on a soft floor covering (like carpet, needle felt, cushion vinyl, etc...) or floating vinyl floor covering. Remove old adhesives and compounds and bond joints or irregularities.
- Unevenness of the subfloor will cause permanent telegraphing or torn sheet vinyl. Therefore, please check the requirements of the code of practice in your country and verify the technical datasheet of your product. In general, the proper application of a self-leveling underlayment will help to prevent telegraphing effects. Please take into consideration that telegraphing effects and the further following are not covered by our warranty conditions.

Recommended rules:

Irregularities at 2m	Irregularities at 20cm	More irregularities / Tile joints
≤ 2 mm unevenness	≤ 0,2-0.5 mm depending on product thickness	Only allowed with leveling compound

- For applications in the solution business, such as trunk of vans with vaulted subfloor, select a suitable plywood or levelling compound to ensure that no irregularities or telegraphing shows through the surface of the finished floor. Telegraphing will be caused by irregularities in the subfloor flatness in combination with the sheet vinyl thickness and type.
- To avoid telegraphing or tears due to castor chair or furniture, avoid moving furniture horizontally without support and please restrict to the use of castor chair wheel type W, use felt pads protection or avoid heavy rolling loads (EN12529, ISO4918).
- Undercut door jambs to fit vinyl.

5. Installation

a. Tools and equipment

- Standard: pencil, measurement tool, steel trim ruler
- Specific:
 - universal safety knife (cutting seams and precise cuts), hook knife (cutting longer lengths without support), quarter moon knife (welding rod cut) and halfmoon knife (cold masking tape)
 - pressing hammer
 - damp cloth, adhesive and adhesive roller or trowel, most advised A1 (compact) - A2 type (acoustic 250-300g/m²) or check trowel size requirements in adhesive specification.
 - cork press or pressure roll.
 - 50 kg link roller
 - Cold-welding kit and tape
 - Hot-welding grooving machine or triangular scraper + Mozart trimming knife + hot air welding gun, welding nozzles and rod.
- Coving set or skirts



b. Accessories

Besides adhesive performance, aesthetic coherence with vinyl is important. Heterogenous sheet vinyl does behave differently than homogenous sheet vinyl or sheet vinyl reinforced by barrier layers. Within heterogenous sheet vinyl, the different product types will also have a different behavior. Foamed or textile backed products will be more robust compared to compact or entry level product portfolio. For specific (sub) tropical climates, or wet rooms having high temperature and/or humidity conditions both in subfloor as in the environmental conditions, or when subfloor moisture is above the Unilin recommended values (see installation manual), we advise to use extra primers, monitor adhesive application strictly and use specific adhesives as indicated in our adhesive guide to avoid bubbles, bad adherence, yellowing or discoloration or any other visual issues.

IVC BV

Nijverheidslaan 29
8580 Avelgem - Belgium
BTW BE 0866.6892.231

ivc.info@unilin.com
unilin.com

T +32 56 65 32 11



A BRAND OF
UNILIN

Vinyl on a roll

Installation	Adhesives	See adhesive recommendation guide
Finishing	IVC Cold Welding	INVISIWELD STARTERBOX
		INVISIWELD WELDING TAPE 32*(30MMX50M)
		INVISIWELD COLD WELDING 12x132G TYPE A
		INVISIWELD COLD WELDING 10X44G TYPE T
	IVC Hot Welding Rod	WELDING ROD 4MMX100M

c. Temperature control during installation

- Maintain a room temperature between 18°C -30°C and subfloor temperature between 15°C-29°C for 24h before and a minimum of 72 h after installation.
- Ensure that the air humidity is kept between 55% RH and 75% RH to enable correct curing of the adhesives.

d. Underfloor heating and cooling precautions

- Surfaces with different floor temperatures need to be decoupled by using an expansion joint or profile.
- Underfloor heating must be set to 'frost protection' or turned off 24 hours before and during installation. After installation, the system should be recommissioned gradually, increasing the temperature by no more than 5°C per day until the desired temperature is reached. The subfloor surface temperature must never exceed 29°C.

e. Installation methods

Warning: Black out windows where direct sunlight streams onto the floor to help regulate and avoid localized temperature variances and avoid hot spots during installation. Avoid wind born dust and contamination.

STEP 1: Precisely cut lengths with 5-10 cm excess in function of seams (double-cut method). If so, allow added excess up to the top of the skirt / cove.

STEP 2: Unroll the lengths and place in position, respecting the direction / orientation showed on the roll label.

STEP 3: Install, avoiding bubbles, compression and tension. Avoid seams on subfloor joints. Create relief cuts in the vinyl to fit around the remaining furniture such as toilet, bath, kitchen islands, fixed furniture, etc

STEP 4: Trim to size. Once placed into the final position into the room, foresee margin of maximum 1 mm for skirting boards, this to avoid buckling / bubbling and to allow for normal movement of the sheet vinyl floor covering.

STEP 5: Carefully bend back half of the sheet to prepare for the application of the adhesive to the subfloor. Spread the right amount of adhesive, with a correct size notched trowel, equally over the subfloor. After applying the adhesive and by the instructions, allow the adhesive to partially dry (open time) until it reaches its bonding strength. When the flooring is placed into the adhesive, if the adhesive is too wet, with time, released gases will cause bubbles or bad adhesion with the vinyl. When in a humid climate, ensure adhesive open time, drying or curing time is sufficient (moisture evaporation time is extended in humid environments). Replace the folded back half of the sheet on the adhesive and into position.

STEP 6: Repeat step 5 for the other half of the length.

STEP 7: To remove bubbles, use a cork press. Work from the center of the sheet towards the edge. Use a link roller or sweep to flatten the adhesive and ensure full adhesive transfer to the underside of the sheet vinyl before the adhesive has cured. Remove excess of adhesive at once with a damp towel.

STEP 8: Clean the floor covering only with a light damp mop to prepare for finishing and visual inspection.



A BRAND OF
UNILIN

Vinyl on a roll

f. Corners and coving or skirts

- Corners are to be applied with a well-defined technique. For internal corners, make small diagonal cuts until sheet vinyl fits the corner. Always verify on which view angle the diagonal cut is to be visible. For external corners, push the material firmly down into the corner and cut excess using a small crosscut.
- Skirts are to be applied after sheet vinyl flooring installation.
- If watertightness is needed, the gap between wall and vinyl can be covered with a suitable low modulus sealant, but these will age and change color over time, potentially requiring reapplication.
- Covings are only allowed with adhered surfaces and advised to use hot welding. Be it cold welding is allowed (except for France), but more difficult to apply.
- Coving by sheet vinyl can be done in 2 ways:
 - Without a coving kit, fold the lengths corner up 90°C in the wall.
 - Using a coving kit with a click skirt or a supporting ramp.

g. Welding

- IVC offers an enormous range of matching and suitable welding accessories, so does not recommend the use of products from other manufacturers.
- Welding is advised, but not mandatory. The welding of the lengths is highly recommended around 24 hours after installation.
- Hot weld: The joints are grooved out to a maximum depth of the wear layer thickness using a hand grooving tool or machine prior to welding. Weld with warm air. Foamed products can be more difficult to hot-weld due to the indentation of the vinyl. Conduct a test welding on a left-over piece before beginning work, to adjust speed and temperature. The seam can be walked over immediately.
- Cold weld:
 - Overlap the two lengths till the pattern match is achieved. The overlapping will be double cut, keeping the knife blade vertically, in one step (or two in case of thick flooring) alongside a metal ruler. When having a double cut, the top vinyl sheet is fully cut through while the underlaying sheet is not fully cut through. When removing excess and positioning, the underlay cut is to be completed with hook knife (certainly for textile backing).
 - The result shall be an extremely tight joint without fullness / bubbling. Fix a special cold-weld masking tape, center over the cut seam, then cut the masking tape with a rolling knife following the seam. Apply the cold-welding liquid by pressing the needle deeply into the seam. Ensure you apply enough liquid along the entire joint. After ~10-20 minutes, depending upon environmental conditions, the cold-welding liquid on the masking tape should be dry and the masking tape can be removed carefully. To define when it is dry you can verify the welding product on the tape, if that is dry, you can remove the tape. Avoid the removal of tape for 30 minutes to 1 hour as the tape will no longer loosen from the sheet. The seam can be walked on after 24 hours.

	Compact/Foam Cold weld	Textile back Cold weld	Repairs/Coving/ open gaps Cold weld	Hot weld Level 5 of welding gun, 440-450°C, 2-3m/minute
Type	Type A	Type T	Type C 0.3-4mm	>0.50 mm wear layer >0.45 mm for double glass fiber product types
Advantages/ limits	<ul style="list-style-type: none"> • All types, all applications • Less visible seams 			<ul style="list-style-type: none"> • Watertightness • Medical, antibacterial applications • Larger areas with multiple joints • Heavy rolling weights, castor chairs • Stairs or ramps



A BRAND OF
UNILIN

Vinyl on a roll

h. Protection after installation

- Do not allow heavy traffic for 72h after installation so that the adhesive can cure.
- Maintain a room temperature between 18°C -30°C and subfloor temperature between 15°C-29°C for 72 h after installation. Ensure gradual heating is applied and avoid temperature increases of more than 5°C per 12h.
- Do not cover the floor with latex or rubber having materials. Avoid furniture with rubber or latex feet (protect with felt pads). Remove all loose debris, ensure dirt or grit are removed with a vacuum cleaner or soft broom. Clean with a mop and pH neutral or with light diluted alkaline cleaner.
- Prevent the floor meeting water for 72h after installation, hereafter the adhesive is sufficiently resistant to water so that the bonding strength will not be affected.

6. Waste management

The roll packaging has almost-fully recycled materials. The packaging is 100% recyclable. The label on the packaging will show the disposal of the packaging material. Some countries have specific labeling demands.

The Take-Back Program is designed to ease the collection and recycling of used heterogeneous vinyl flooring, helping to reduce waste and promote sustainability. Through this program, the flooring is processed into new materials, minimizing environmental impact, depending on the product type, a downcycling or floor-to-floor recycling solution is chosen. The program is for CO2 impact reasons of transportation mainly for European countries and UK. Rest of world, contact our Sales or the recover team, recover@unilin.com to procure more information on local take back or disposal programs/centers.



7. Terms and Conditions, Warranty

Separate purchase T&C [Unilin | division flooring - Sales conditions](#) and IVC sheet vinyl warranty clauses apply [Document Library | IVC Commercial](#), available on the website and links mentioned on the purchase order confirmation. Read carefully prior to purchase, install and keep your sheet vinyl floor covering. Videos are available on [Installation guides for heterogeneous vinyl | Install and Clean](#).

Further queries and claims are to be reported through your respective distribution channel that can transfer the claim with a claim form to IVC.aftersales@unilin.com or for Poland sales officeflooringpolska@unilin.com.

This version was issued in April 2026, and replaces all earlier versions. The English version is always leading. IVC reserves the right to update this information at any time, without notice.

Enjoy your sheet vinyl floor.