



COMMERCIAL



Nerutex

Luxury vinyl with black textile backing



Nerutex

Luxury vinyl with black textile backing

Nerutex is the newest addition to our collection of high-quality vinyl flooring with **chic, black textile backing**. A superior choice for **semi-loose-lay vinyl**, this elegant range of neutral wood, stone and concrete designs offers the opportunity for effortless co-ordination. Its superb features include a durable **0.50 mm wear layer**, Hyperguard+ PU protection, **18dB noise reduction** and premium black textile backing for a luxury effect and easier installation. With the firm feeling of a compact floor, it has the benefits of a high-performance foamed floor, making it an ideal choice for living rooms, student accommodation, elderly care and multi-family housing. Nerutex comes with a **12-year warranty** for all commercial use.

Summary

01. Inspiration	01
02. The collection	05
03. Technical information	07
04. Sustainability	15

Timeless elegance



Rhapsody 543

Rhapsody

Inspired by the grains and knots of natural wood, our Rhapsody design is available in four handsome colours to introduce confident character.



Boreal 545

Boreal

From classic to contemporary, the herringbone pattern of our Boreal flooring is timelessly elegant. It's available in four chic colour variations.

INSPIRATION

Effortless design combinations



DID YOU KNOW?

Wood, concrete and stone, every style in the Nerutex range co-ordinates seamlessly.

Odin T35

Boreal 548

Boreal 548 / Odin T35



Collection overview

WOOD



Sundance Oak 532 Sundance Oak 536 Sundance Oak 543 Sundance Oak 546 Sundance Oak 547



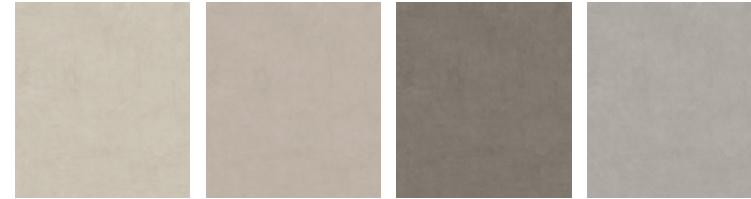
Rhapsody 543 Rhapsody 565 Rhapsody 591 Rhapsody 595

HERRINGBONE



Boreal 537 Boreal 538 Boreal 545 Boreal 548

MATERIAL

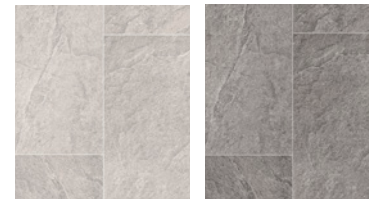


Odin T35 Odin T39 Odin T49 Odin T85



Sting T31 Sting T34 Sting T91 Sting T94

TILE



Cornwall Slate T09 Cornwall Slate T96

What makes Nerutex unique?

Order
free samples



SEMI-LOOSE LAY



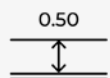
COMFORTABLE
UNDERFOOT



AVAILABLE WIDTH
2/4 M



HYPERGUARD+



WEAR LAYER



BLACK
TEXTILE BACKING



ACOUSTIC
18 dB



12 YEARS
WARRANTY

T-emboss

The **smooth texture** of this subtle surface perfectly suits a sophisticated, concrete-effect design – and is easy to keep clean.

5-emboss

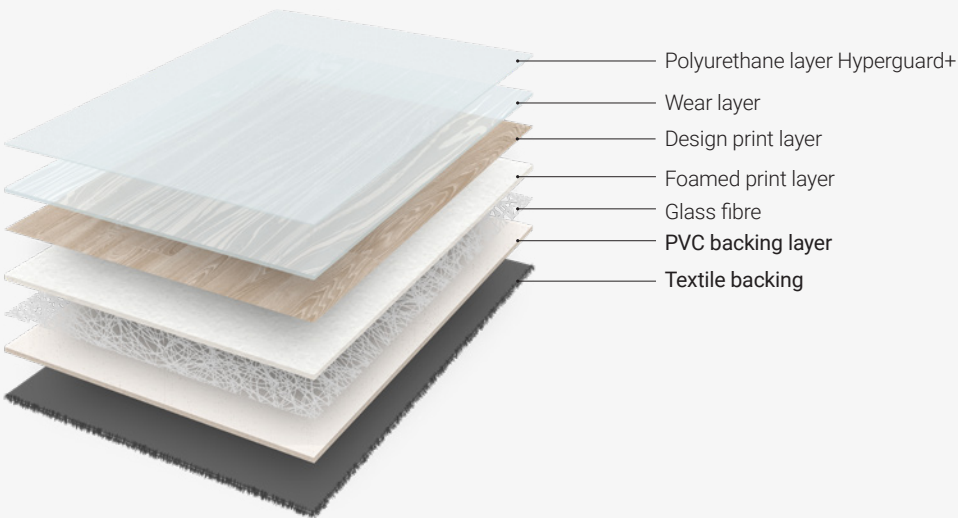
This **highly textured** surface embodies the character of natural wood for a beautifully realistic effect.



Sting T91

TECHNICAL INFORMATION / PRODUCT COMPOSITION

Flooring built to last



TECHNICAL INFORMATION / INSTALLATION GUIDE

Installation & maintenance

We offer a tailor-made service to help make the most of our high-quality products. For all our floors, we provide a guide containing all the necessary information for proper **installation, cleaning and maintenance**.

Installation direction

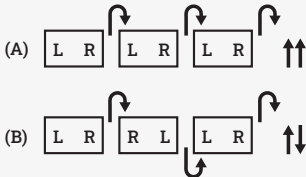
Always follow the installation instructions about direction:

REVERSE (B) ↓↑

DO NOT REVERSE (A) ↑↑

L= Left, R= Right

The arrow on the back of a vinyl roll indicates the direction of production.



Consult and download our guides on our website.

TECHNICAL INFORMATION / SEMI-LOOSE LAY

Installation with loose-lay tape

With Nerutex we get a fast and easy installation. This semi-loose-lay installation uses our specialised double-sided adhesive tape at edges and seams to fix Nerutex in place.

100 mm x 50 m (343915)



Benefits for installers

- ✓ Quicker renovation of spaces
- ✓ Can be installed on top of existing floors
- ✓ Reduced preparation time
- ✓ No glue
- ✓ No odour
- ✓ No waiting time between stages
- ✓ Immediately suitable for occupation
- ✓ Up to 30% cost saving compared to adhesives
- ✓ 20% faster than glue-down installation
- ✓ Simple uplift and removal for Recover recycling

Benefits for projects owners

- ✓ Fast construction time
- ✓ Optimised installation cost
- ✓ No glue
- ✓ 100% recyclable through Recover take-back
- ✓ No damage to subfloor when replacing
- ✓ Made with green energy

Consult and download our guides on our website.

Video with installation instructions





TECHNICAL INFORMATION

Luxury black textile backing

For the highest-quality flooring experience, our premium black textile backing is a luxurious choice with a smart, contemporary look. Weighing **150 g/m²**, it smooths out small imperfections in the sub-floor, saving both time and cost in new builds and renovations. Its superior acoustic properties combine with excellent insulation for **warmth and comfort underfoot**, and it can be **installed without glue** in any size space.

TECHNICAL INFORMATION • BLACK TEXTILE BACKING



Cornwall Slate T96



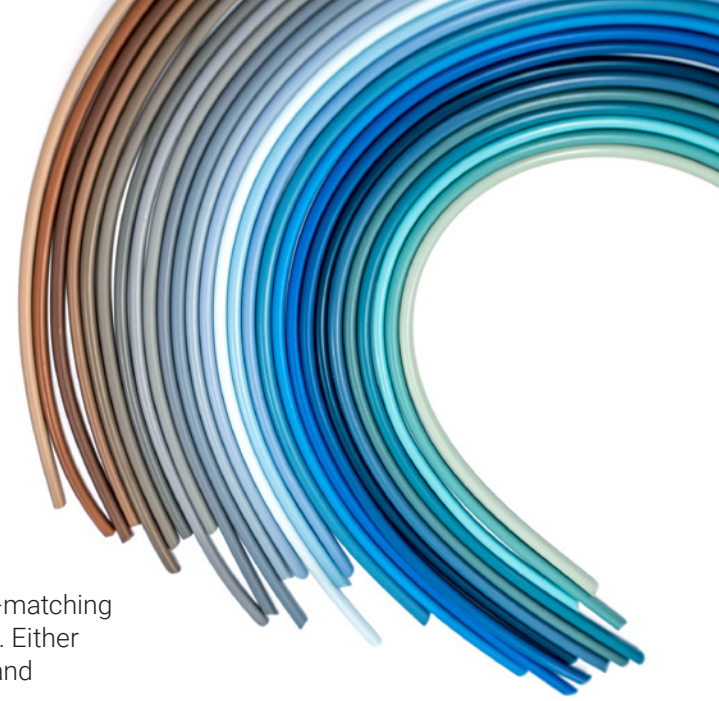
TECHNICAL INFORMATION

Hot Welding

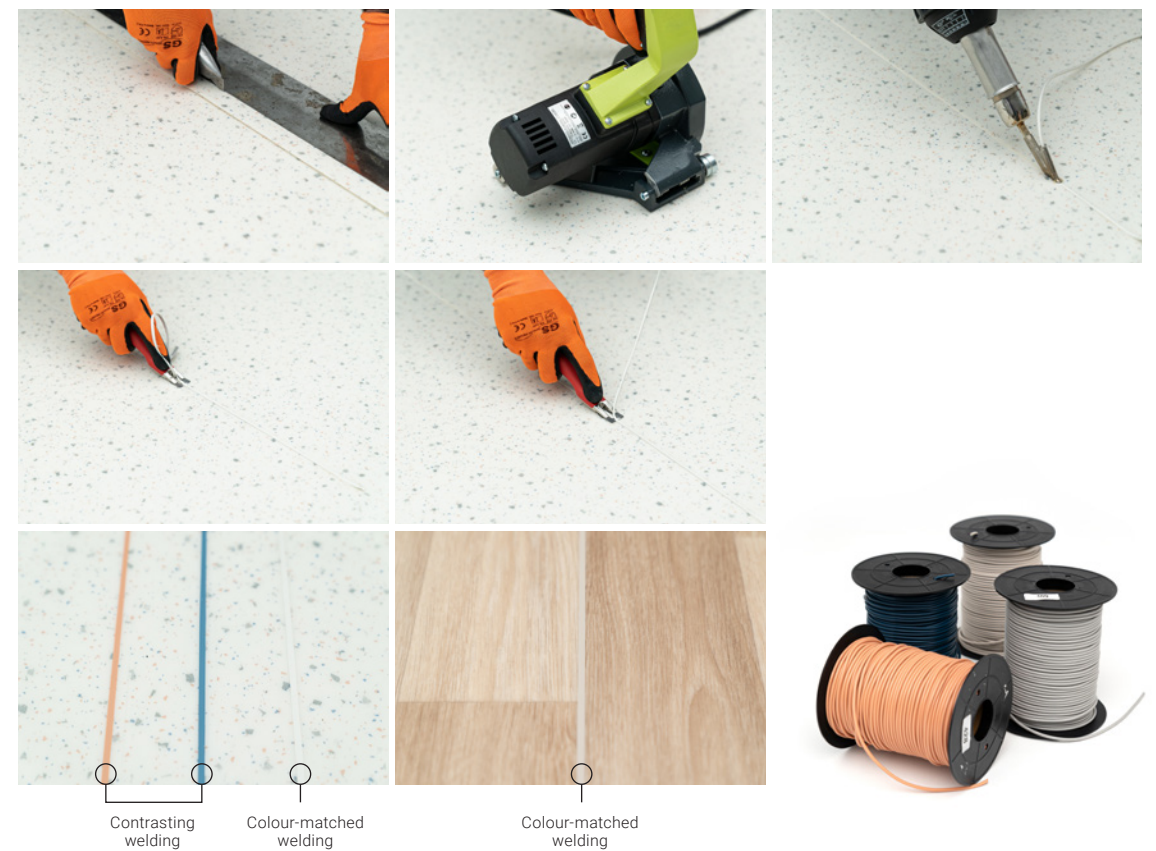
ø 4 mm x 100 m length

We offer a wide range of welding rods for colour-matching or contrasting with our heterogeneous sheet vinyl. Either way, the result will be a floor that is both strong and beautiful.

Warranted by IVC Commercial.



Steps



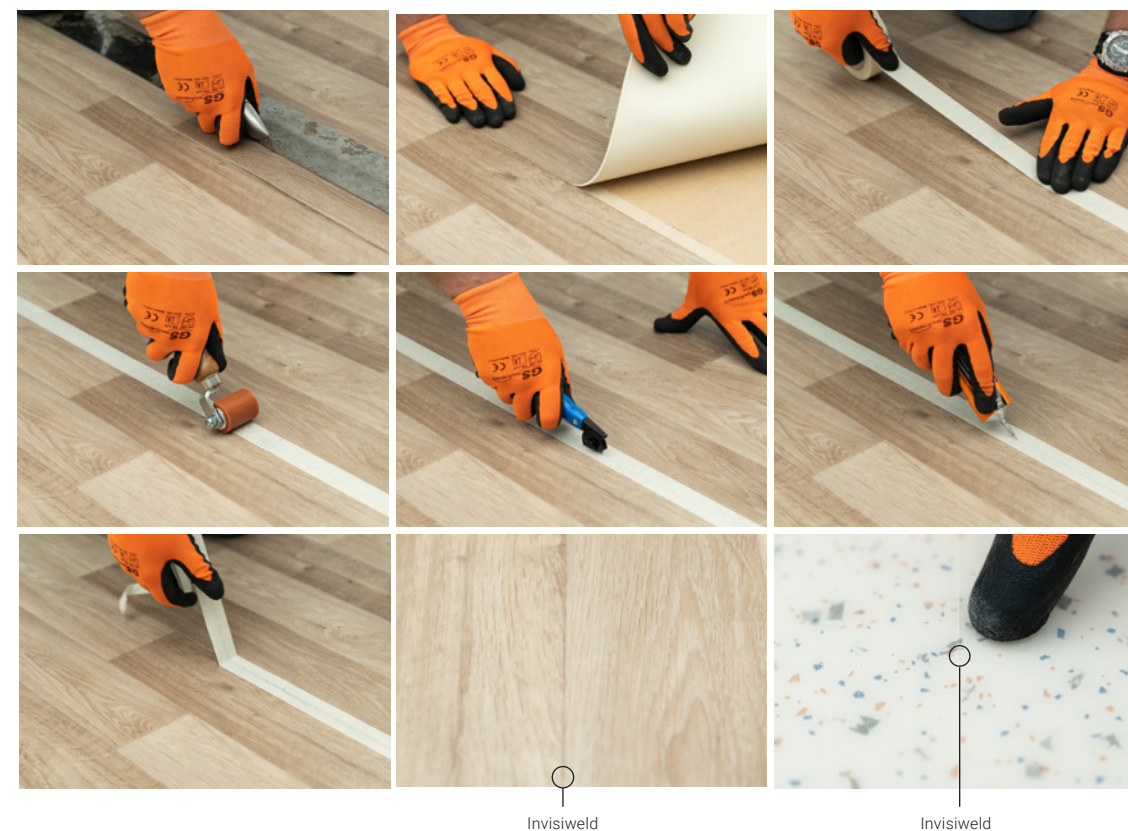
This is only a summary of the full installation instructions. Please check our website: [ivc-commercial.com](https://www.ivc-commercial.com) for more details.

TECHNICAL INFORMATION

Cold Welding

Invisiweld

Invisiweld technology has the ability to achieve an almost **imperceptible join** with all IVC Commercial heterogeneous vinyl floor coverings. Fast, clean and easy to use, Invisiweld is economical and leaves a seamless, strong and watertight join.



This is only a summary of the full installation instructions. Please check our website: ivc-commercial.com for more details.



**Our
sustainability
journey**

SUSTAINABILITY

One group, one vision

In 2022 Unilin launched One Home, our group-wide sustainability strategy with ambitious targets in several domains. We look into the environmental impact of our products and production processes, but also at how we live at home, at work and on our planet.

ONEHOME



PLANET HOME

Greenhouse gas emissions must be reduced or even completely eliminated. This is a major challenge for the manufacturing industry, as we still too often burn fossil fuels and end-of-life products. We need to switch to circularity, using **renewable or recycled materials** and making **recyclable products**.



YOUR HOME

A healthy, comfortable and sustainable living environment is more important than ever. The products we make must provide **added value to our customers**, without compromising on **health, comfort or sustainability**.

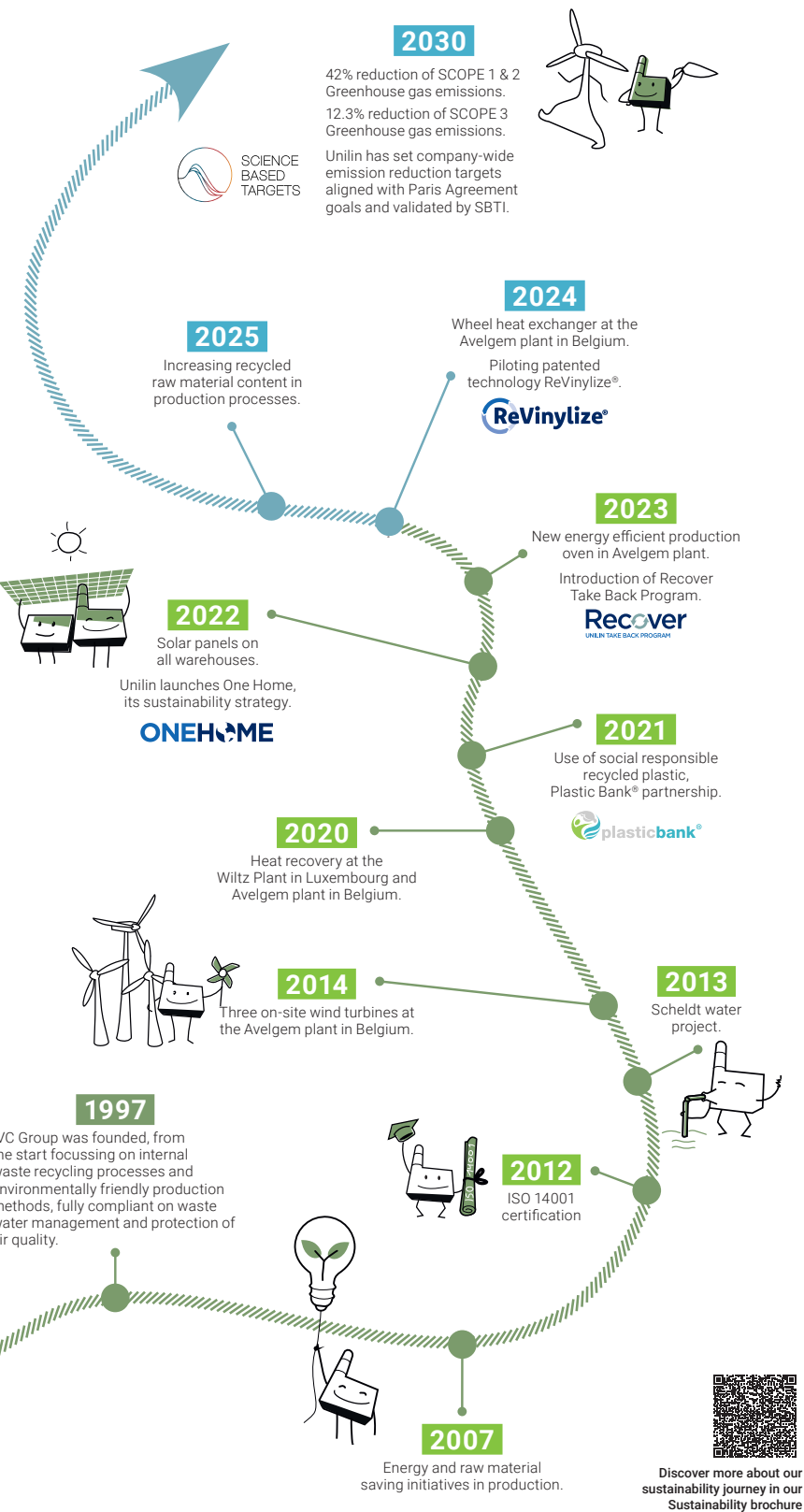
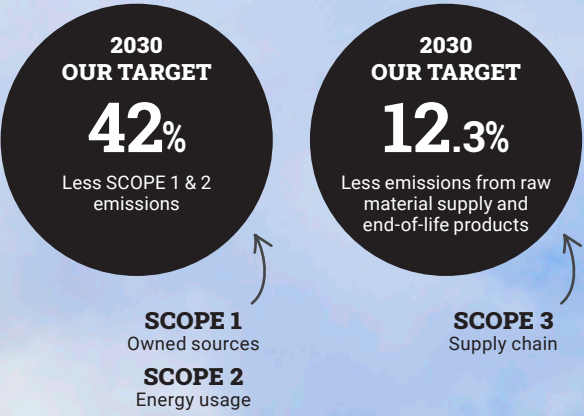


OUR HOME

Our company is a second home for **more than 8,000 employees**. We aim to create a **positive, stimulating and safe working environment** where they feel good and valued; an environment where everyone can challenge themselves and continue to grow. Our community, municipalities and neighbours also form a significant part of our story.

TIMELINE

Our sustainability journey through time

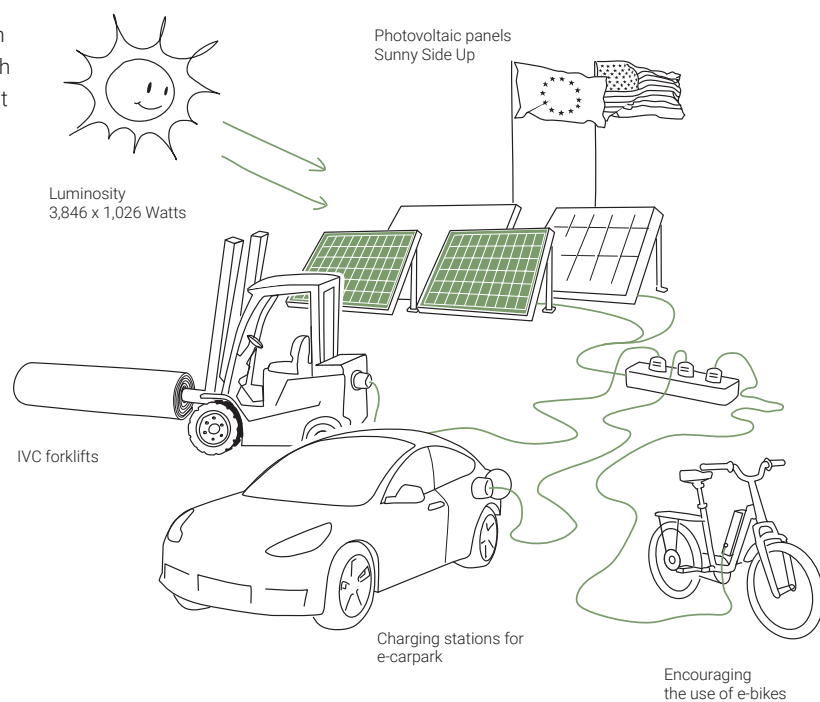


NATURAL RESOURCES

Smart use of renewable energy

Sun

We use solar energy to make our fleet greener, in every sense of the word. For instance, we use the power from our solar panels to charge our employees' electric cars and e-bikes. Furthermore, even the forklifts in our warehouses are charged with solar energy. The result is a great amount of kilometres with zero emissions.



Solar panels



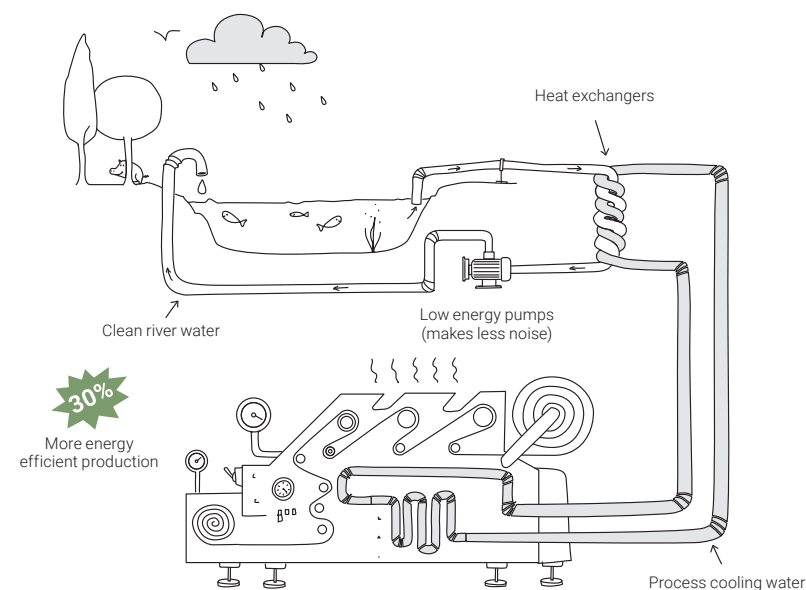
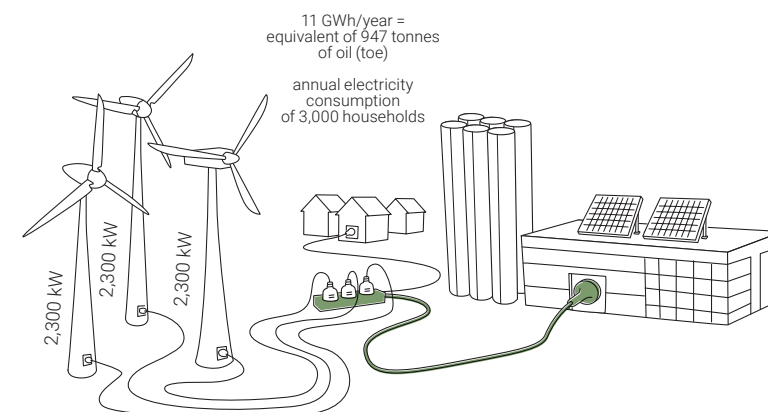
The **IVC Flooring Development Centre** in Waregem (Belgium) has been turned into a sustainable base. It uses heat recovery, intelligent lighting technology and is powered by solar panels on the building.



Solar panels contribute significantly to reducing our plants' carbon footprint. We installed more than 6,000 solar panels on the roof of our **Avelgem plant**, generating 3,076 MWh per year.

Wind

In 2014, three wind turbines have been installed on the Avelgem production site. The turbines produce around **11,000 MWh of renewable energy each year**. That's about as much as the yearly electricity consumption of 3,000 Flemish households. With this clean energy we power our own production facilities. Avelgem Green Power allows IVC and our **partner communities** to work together to promote green energy.



Water

The manufacturing of vinyl flooring requires cooling water to absorb heat in the different stages of production. IVC has invested in a system that uses surface water from the nearby **river Scheldt as a secondary coolant**. Using only a minimal amount of energy, river water is pumped up and sent along the closed loop flow of our Avelgem

plant's process cooling water. The exchange of thermal energy (up to 4,000 kW) is achieved through state-of-the-art heat exchangers, so there is no direct contact between the river water and the process water en route.

Using minimal electricity compared to other cooling systems, these innovations have resulted in a **30% increase of energy efficiency** in the overall production of vinyl flooring. By eliminating the need for machine-driven refrigeration, we've also significantly **reduced on-site noise** and created better working conditions.

TOWARDS CIRCULARITY

Recover, A new life for floors

We try to reduce our environmental impact not only by producing efficiently, but also by the way we use materials. Today, production waste from sheet vinyl flooring and post-installation materials returned through our Recover Take Back Program are being recycled or repurposed for use in the backing of LVT products. This way, we work towards our goal of a more circular product.



Our partners in Recover are growing

We have several B2B partners working to take back sheet vinyl flooring, and the interest is growing globally. Recent partners who are main contributors to our programme are Trirecycle (UK), Jordan (DE), JMT Floorcoverings (NL), Cotap 5 (NL), Rubik (DE) and V-Podlahy (CZ), as well as many French customers and distributors who collect post-installation sheet vinyl flooring. Together, we are working on joint goals towards a more circular flooring industry.

Introducing our partners to the recycling process

Last year, JMT Floorcoverings recovered 6 tonnes of sheet vinyl flooring. We visited a recycling centre with them, observing how 4 tonnes was recycled into granules intended for specific, non-flooring applications (downcycling). Another 1.2 tonnes was used for an innovative pilot, recycling textile-backed vinyl into granules that can be reused as a raw material for our LVT flooring.



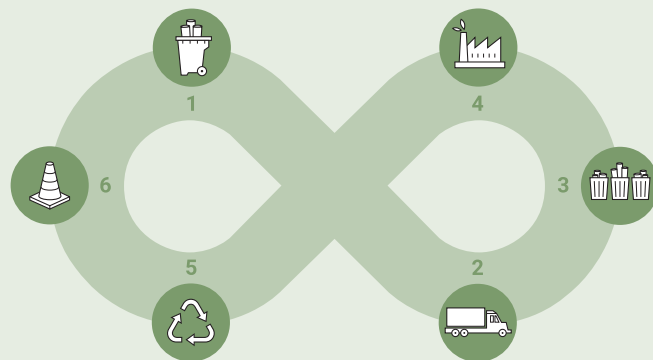
King Charles' Coronation United Kingdom

For King Charles' Coronation in Westminster Abbey, London, we supplied 726 m² of Ultimate Wood & Stone and Bingo sheet vinyl flooring, totalling 1.2 tonnes. After the event, we recovered and fully recycled the flooring, demonstrating our commitment to sustainability.



How we recover sheet vinyl flooring

MORE INFO:



1. COLLECTING

After installation or at end-of-life, old floors and leftover rolls are collected into bags or on pallets. The customer contacts us to arrange collection.

2. TRANSPORT

Depending on what we've collected, we have several options to bring the waste back: to our recycling centres, send it to one of our partners or send it back to base.

3. SORTING

Before the collected materials are ready for recycling, they need to be sorted and cleaned prior to being shredded.

4. RECYCLING

At recycling centres, we convert flooring to raw materials for LVT or other applications, such as street furniture.

5. NEW FLOORING

The recycled material is used as raw material for new LVT flooring.

6. OTHER APPLICATIONS

If returned material can't be recycled into new flooring, because of contamination or not being REACH compliant, we then look for other applications.

Recover
UNILIN TAKE BACK PROGRAM

CASE STUDIES

Collecting and recycling
our sheet vinyl flooring.



Certifications for our sustainability journey

At IVC, we aim to add value to our customers’ living spaces without compromising on health, comfort or sustainability. In order to do so, we rely on third-party certifications to provide transparency in terms of environmental impact and safety of our products.

Member of the green industry

As a leader in flooring, we belong to a wide range of organisations that represent the industry. We are a member of ERFMI (EU), FEB (DE), DGNB (DE) and Kaléi (FR). With both ERFMI and Kaléi we are working together to provide our customers with collective Environmental Product Declarations (EPD) and Fiches de Déclaration Environnementale et Sanitaire (FDES), showing our industry efforts towards greener products. In Belgium, we are a member of the Fedustria and Voka employer organisations. As part of these organisations, we consider it important to work together for a green industry.



Environmental management

Since 1997 IVC has made substantial efforts towards a precisely tailored, fully integrated environmental management system. In 2012 we were awarded ISO 14001 certification, showcasing our commitment to environmental responsibility. This certification for ecological performance is a good reflection of our past efforts and current compliance with environmental rules and regulations.

Additionally we only purchase and process raw materials that are in line with the REACH regulations and only work with suppliers who comply with these regulations. In this way we are able to guarantee the integrity and quality of the end product that we deliver to the end user.



Quality management

As part of our ISO 9001 certification, we have implemented a quality management system that enables us to comply with the strictest regulations. This demonstrates our ability to consistently provide products that meet customer and regulatory requirements.



Ecolabels

Together with temperature and humidity, air quality is one of the most important factors in interior environments. We want to make sure that our vinyl flooring – often a central part of people’s living spaces – contributes to healthy and safe living spaces, and to ensure that they don’t pose any health risks to our end users. To do so, we make sure that our finished products intended for interior use comply with some of the strictest indoor emission labels.





Get in touch

Want to learn more about IVC Commercial's flooring solutions, or need help tackling an exciting project? We've got you covered.

Go to [ivc-commercial.com](https://www.ivc-commercial.com) to browse our collections, order samples, download inspirational brochures or stop by one of our showrooms.

You can also make an appointment with our dedicated team by sending us an email via ivc.info@unilin.com.

Follow us on [in](#) [p](#) [@](#) [f](#) [v](#)



Nerutex

Heterogeneous vinyl

Technical specifications

Spécifications techniques - Technische specificaties - Technische Spezifikationen

Flooring type / Type de couverture - Type vloer - Fußbodenart		Acoustic textile flooring
Heterogeneous PVC / PVC hétérogène - Heterogene PVC - Heterogene PVC	EN 650	
Type of installation / Type de pose - Type installatie - Art der Installation		Semi-loose lay
Level of use / Classe d'usage - Gebruiksklasse - Eignungsklasse	EN ISO 10874	23-33-42
Total thickness / Epaisseur totale - Totale dikte - Gesamtdicke	EN ISO 24346	2,80 mm
Wear layer / Couche d'usure - Slijtlaag - Nutzschicht	EN ISO 24340	0,50 mm
Wear layer PUR treatment / Traitement polyuréthane - PUR slijtlaag behandeling - Schutz vor Schmutz PUR		HyperGuard+
Total weight/m² / Poids total/m² - Totaal gewicht/m² - Gewicht/m²	EN ISO 23997	ca. 2.300 g
Width / Largeur - Breedte - Breite	EN ISO 24341	2-4 m
Standard length / Longueur standard - Standaard lengte - Standardlänge	EN ISO 24341	ca. 30 m
Weight of standard roll / Poids standard des rouleaux - Standaard rolgewicht - Standard-Rollengewicht		ca. 138-270 kg
Inflammability / Classement feu - Brandklasse - Brandverhalten	EN 13501-1	Cfl-S1
Slip resistance / Glissance - Antislip - Rutschfest	EN 13893	DS
Slip restraint / Résistance au glissement - Slipweerstand - Rutschhemmung	EN 16165 annex B	R10 - R11*
Residual indentation / Poinçonnement rémanent - Restindruk - Eindrückverhalten Average value / valeur moyenne - gemiddelde waarde - Durchschnittswert	EN ISO 24343-1	norm ≤ 0,20 mm
Furniture leg resistance / Résistance au pied de meuble - Meubelpoottest - Möbelschubtest	EN ISO 16581	PASS
Curling / Incurvation - Krulling - Schüsselung	EN ISO 23999	≤ 8 mm
Electrical resistance / Résistance électrique - Elektrische weerstand - Elektrischer Widerstand	EN 1081	9,40 x 10 ⁸ Ohm
Static electrical propensity / Accumulation de charges électrostatiques - Electrostatische Propensiteit - Elektrostatische Verhaltung	EN 1815	≤ 2kV (antistatic)
Dimensional stability / Stabilité dimensionnelle - Dimensionele stabiliteit - Massänderung	EN ISO 23999	< 0,10% (norm ≤ 0,40%)
Thermal conductivity / Conductivité thermique - Warmtedoorgangscoeffizient - Wärmeleitfähigkeit	EN 12667	0,068 W/(m.K)
Heat insulation / Isolation thermique - Thermische isolatie - Wärmedurchlasswiderstand	EN 12667:2001-01	0,0388 m². K/W
Binder quantity in wear layer / Taux de liant dans la couche d'usure - Hoeveelheid bindmiddel in slijtlaag - Bindemittelmenge in der Nutzschich	EN ISO 10582	Type I
Abrasion group / Groupe d'abrasion - Slijtageweerstand - Verschleißverhalten	EN 660-2	Class T
Indoor air quality / Qualité de l'air intérieur - Binnenmilieu - Raumluftqualität		LOW VOC
Acoustic insulation / Efficacité acoustique - Kontaktgeluidisolatie - Trittschallverbesserungsmaß	EN ISO 717-2	ΔLw 18 dB
Castor chair resistance / Résistance aux chaises à roulettes - Bestand tegen stoelwielen - Stuhlrollenfestigkeit	EN ISO 4918	PASS
Castor type / Type de chaises à roulettes - Type stoelwielen - Stuhlrolle Typ	EN 12529	Type W
Light fastness / Résistance à la lumière - Lichtechtheid - Lichtechtheit	ISO 105-B02	≥ 6
Underfloor heating / Chauffage par le sol - Vloerverwarming - Bodenheizung	EN 12524/ EN 12667	Suitable ≤ 27°C
Resistance to chemicals / Résistance aux produits chimiques - Chemicaliënresistentie - Chemikalienbeständigkeit	EN ISO 26987	Very good
Hot welding / Soudure thermique - Warm lassen - Thermische Verschweißung		Available
Cold welding / Soudure à froid - Koud lassen - Kaltverschweißung	Invisiweld	Suitable
Warranty years / Garantie ans - Garantie in jaren - Garantie Jahren		12

*Depending on the type of texture.

The warranty covers manufacturing defects and premature wear in the event of normal use. The products do not contain any substances from the current candidate list published by ECHA (substances of very high concern) to be published under the REACH regulation. Exclude any rubber parts that may come into direct contact with the flooring (chair ends, furniture, wheels). Use only PVC or polyethylene components. IVC reserves the right to change or amend any written information without notice. Ensure the latest information is being consulted by referring to the website.





EN 14041
24 DOP - VB128
NERUTEX
resilient floor covering
EN 650



EMISSIONS DANS L'AIR INTÉRIEUR
A+ A B C



REACH
EUROPEAN UNION
RESTRICTED SUBSTANCES



MADE IN
EUROPE



ISO 9001
BUREAU VERITAS
Certification
BEN/1571-1



ISO 14001
BUREAU VERITAS
Certification
BEN/1571-1



ISO 14001
BUREAU VERITAS
Certification
BEN/1571-1

